



US011591375B2

(12) **United States Patent**  
**Bermudez**(10) **Patent No.:** **US 11,591,375 B2**(45) **Date of Patent:** **Feb. 28, 2023**(54) **IMMUNOGENIC COMPOSITIONS**  
**COMPRISING *MYCOBACTERIUM BOVIS***  
**SURFACE PROTEINS AND USES THEREOF**(71) Applicant: **Oregon State University**, Corvallis,  
OR (US)(72) Inventor: **Luiz E. Bermudez**, Corvallis, OR (US)(73) Assignee: **Oregon State University**, Corvallis,  
OR (US)(\*) Notice: Subject to any disclaimer, the term of this  
patent is extended or adjusted under 35  
U.S.C. 154(b) by 0 days.(21) Appl. No.: **16/963,770**(22) PCT Filed: **Jan. 22, 2019**(86) PCT No.: **PCT/US2019/014598**

§ 371 (c)(1),

(2) Date: **Jul. 21, 2020**(87) PCT Pub. No.: **WO2019/144139**PCT Pub. Date: **Jul. 25, 2019**(65) **Prior Publication Data**

US 2021/0040162 A1 Feb. 11, 2021

**Related U.S. Application Data**(60) Provisional application No. 62/620,047, filed on Jan.  
22, 2018.(51) **Int. Cl.****C07K 14/35** (2006.01)**A61P 31/04** (2006.01)**A61K 9/00** (2006.01)**A61K 39/04** (2006.01)**A61K 39/00** (2006.01)(52) **U.S. Cl.**CPC ..... **C07K 14/35** (2013.01); **A61K 9/0019**  
(2013.01); **A61K 39/04** (2013.01); **A61P 31/04**  
(2018.01); **A61K 2039/54** (2013.01); **A61K**  
**2039/543** (2013.01); **A61K 2039/552** (2013.01)(58) **Field of Classification Search**CPC ..... **C07K 14/35**; **A61P 31/04**; **A61K 9/0019**;  
**A61K 39/04**; **A61K 2039/54**; **A61K**  
**2039/543**; **A61K 2039/552**

See application file for complete search history.

(56) **References Cited****U.S. PATENT DOCUMENTS**5,330,754 A 7/1994 Kapoor et al.  
6,949,345 B1 \* 9/2005 Menozzi ..... C07K 14/35  
424/130.1

7,595,383 B1 \* 9/2009 Gennaro ..... C07K 14/35

424/234.1

7,608,277 B2 \* 10/2009 Roth ..... A61K 39/04

424/248.1

9,181,311 B2 \* 11/2015 Spencer ..... A61P 31/06

9,339,534 B2 \* 5/2016 Carroll ..... C07K 14/35

9,926,346 B2 \* 3/2018 Fulkerson ..... A61K 49/0006

9,982,039 B2 \* 5/2018 Carroll ..... A61K 39/04

11,021,534 B2 \* 6/2021 Hall ..... G01N 33/5695

2002/0169308 A1 \* 11/2002 Hillman ..... C07K 14/705

536/23.5

2007/0042383 A1 \* 2/2007 Kapur ..... C12Q 1/689

435/6.15

2012/0034257 A1 2/2012 Pethe et al.

2015/0291669 A1 \* 10/2015 Fulkerson ..... A61K 49/0006

424/9.81

2021/0040162 A1 \* 2/2021 Bermudez ..... A61P 31/04

**FOREIGN PATENT DOCUMENTS**

CN 106589082 4/2017

WO WO-2006060484 A2 \* 6/2006 ..... A61K 39/04

WO WO-2008073444 A2 \* 6/2008 ..... A61P 31/00

WO WO-2009114139 A2 \* 9/2009 ..... A61K 45/06

**OTHER PUBLICATIONS**Sechi et al Vaccine, 2006, 24:236-243. available online:Nov. 28,  
2005 (Year: 2005).\*Chen et al, international Journal of microbiolgy.2019, article ID  
9167271, 12 pages. published: Jun. 3, 2019 (Year: 2019).\*Ellis (Vaccines, W.B. Saunders Company, Chapter 29, 1988, pp.  
568-574).\*

Skolnick et al. (Trends in Biotechnology 18: 34-39, 2000).\*

Bowie et al (Science, 1990, 257:1306-1310).\*

Colman Res. (Immunology, Jan. 1994, vol. 145, pp. 33-36).\*

Greenspan et al. (Nature Biotechnology 7: 936-937, 1999).\*

Boslego et al (Vaccines and Immunotherapy, 1991, Chapter 17).\*

Chen et al., "Mycobacterium bovis BCG Surface Antigens Expressed  
under the Granuloma-Like Conditions as Potential Inducers of the  
Protective Immunity," *Int J Microbiol* 2019:9167271, 2019.International Search Report and Written Opinion for PCT/US2019/  
014598, dated May 31, 2019.McNamara et al., "Surface Proteome of 'Mycobacterium avium  
subsp. hominissuis' during the Early Stages of Macrophage Infec-  
tion," *Infect Immun* 80:1868-1880, 2012.

\* cited by examiner

\* cited by examiner

*Primary Examiner* — Robert A Zeman(74) *Attorney, Agent, or Firm* — Klarquist Sparkman,  
LLP(57) **ABSTRACT**Antigenic surface proteins expressed by *Mycobacterium*  
*bovis* under conditions that mimic the natural environment  
in a host are described. Use of the identified surface proteins  
in immunogenic compositions for immunization against *M.*  
*bovis* are also described. Nucleic acid molecules and plas-  
mids encoding the *M. bovis* surface proteins are further  
described.**18 Claims, 5 Drawing Sheets****Specification includes a Sequence Listing.**

FIG. 1A

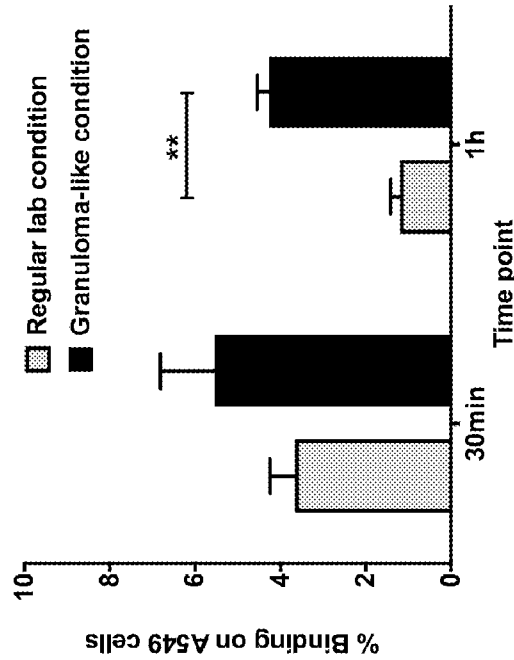


FIG. 1B

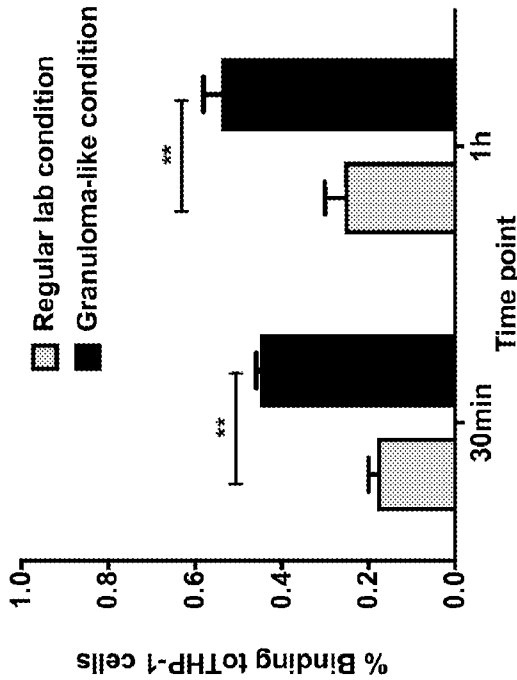


FIG. 1C

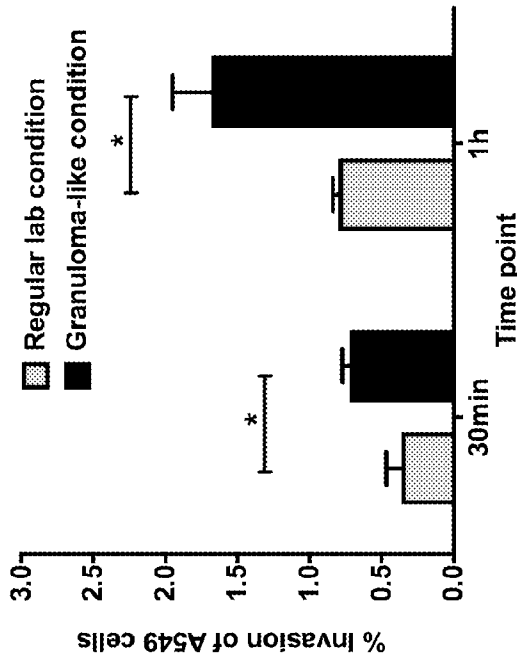


FIG. 1D

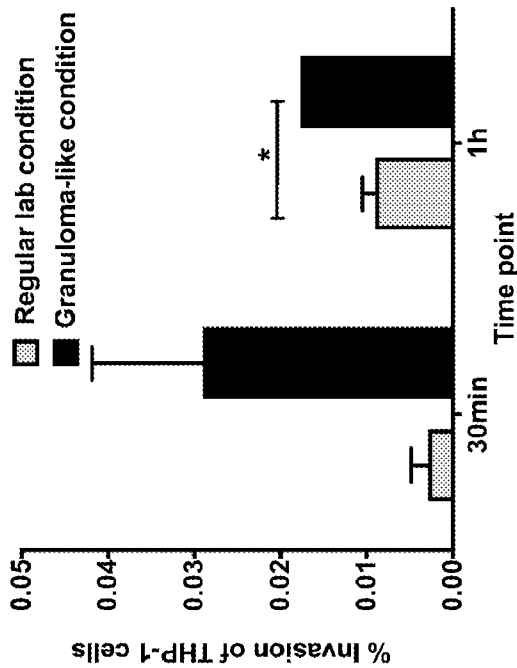


FIG. 2A

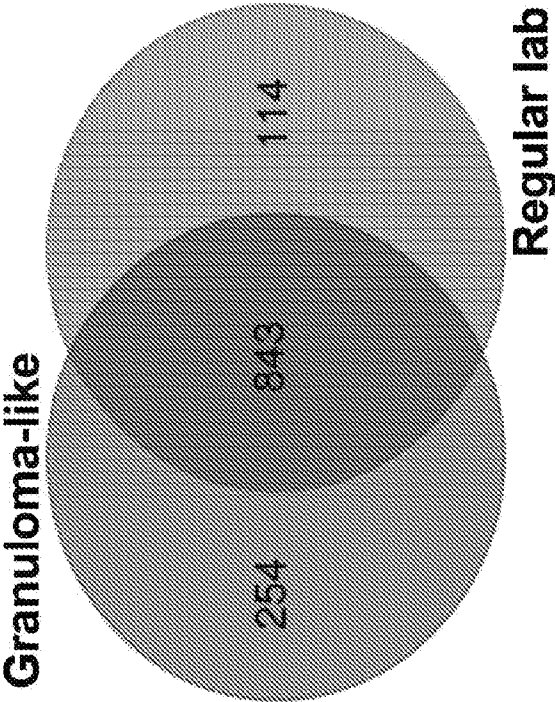


FIG. 2B

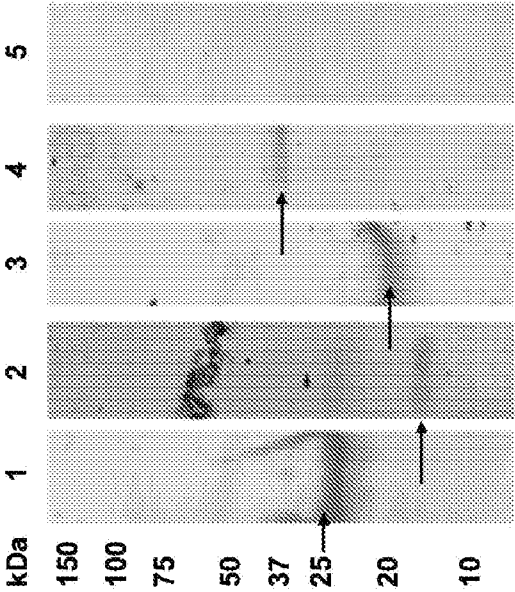


FIG. 3A

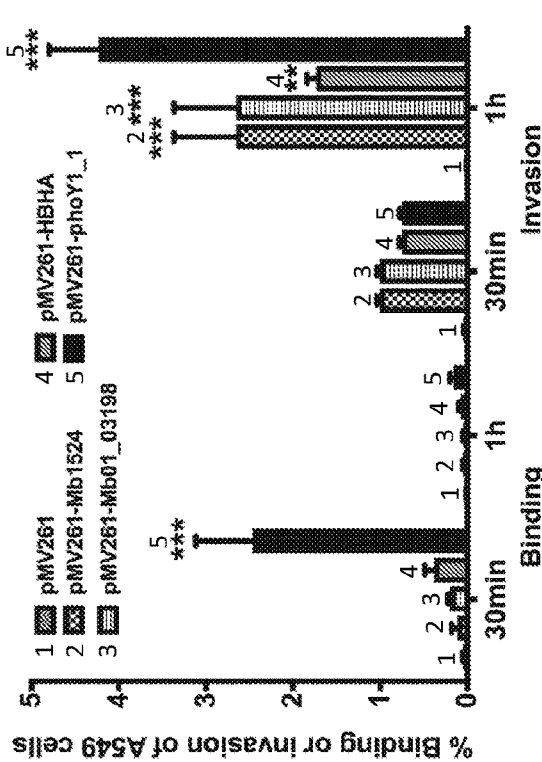


FIG. 3B

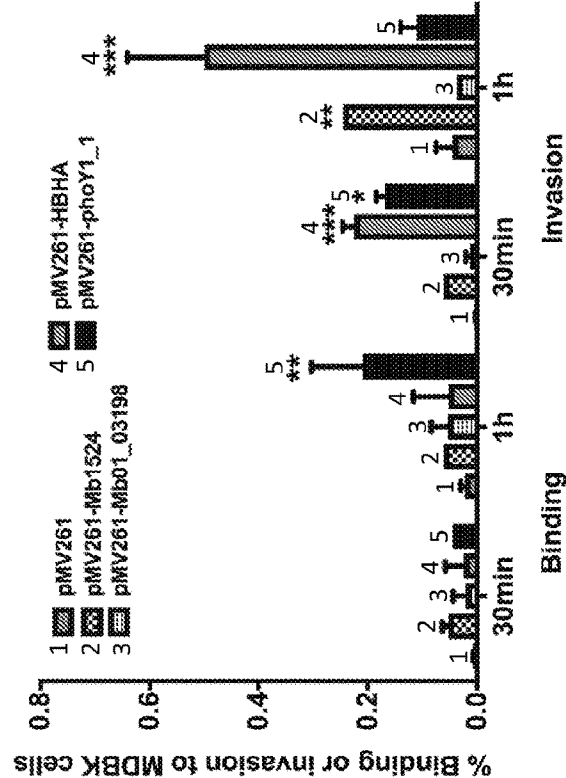


FIG. 4A

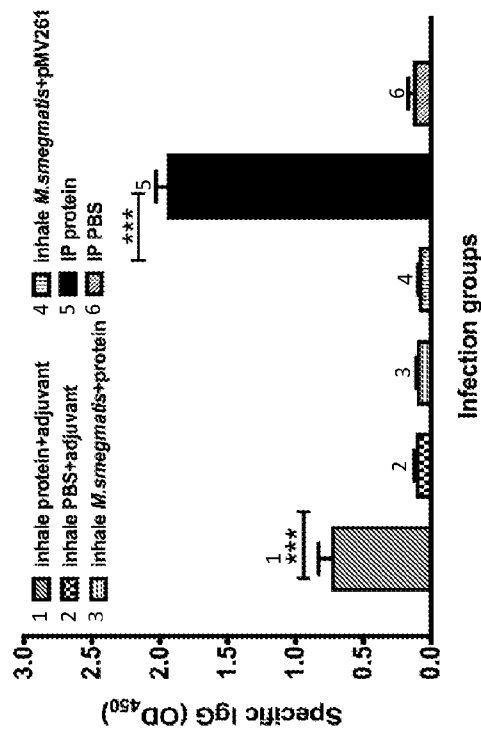


FIG. 4B

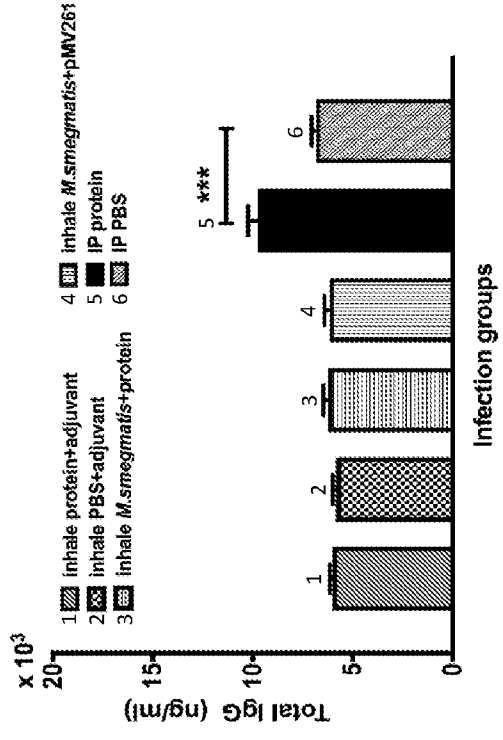


FIG. 4C

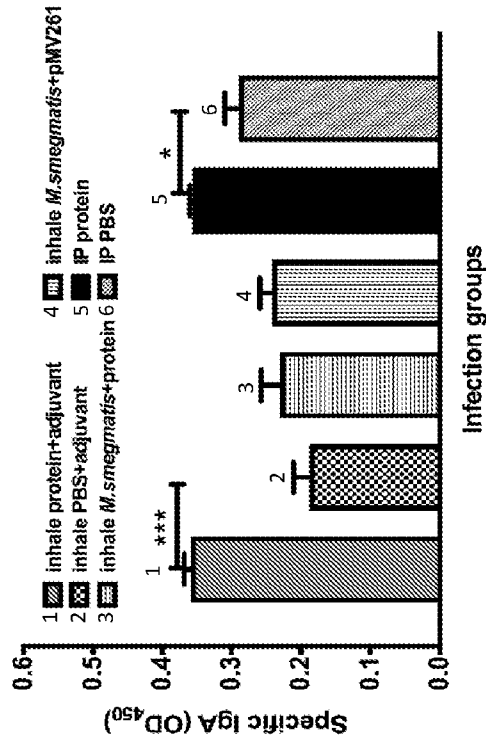


FIG. 4D

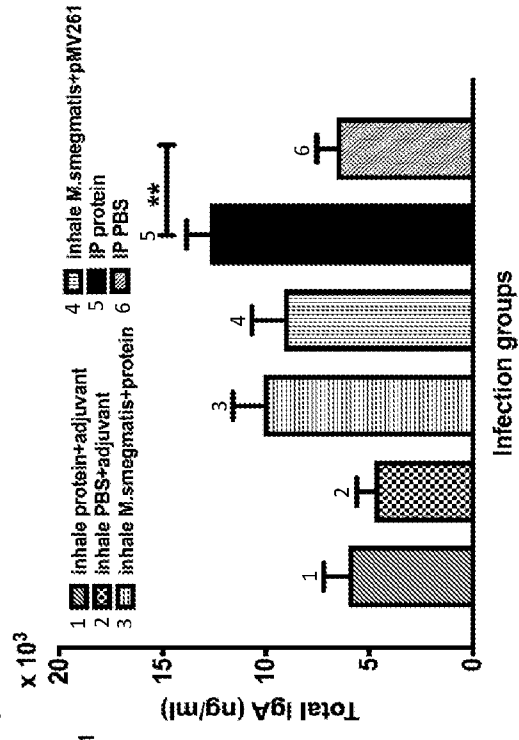


FIG. 5B

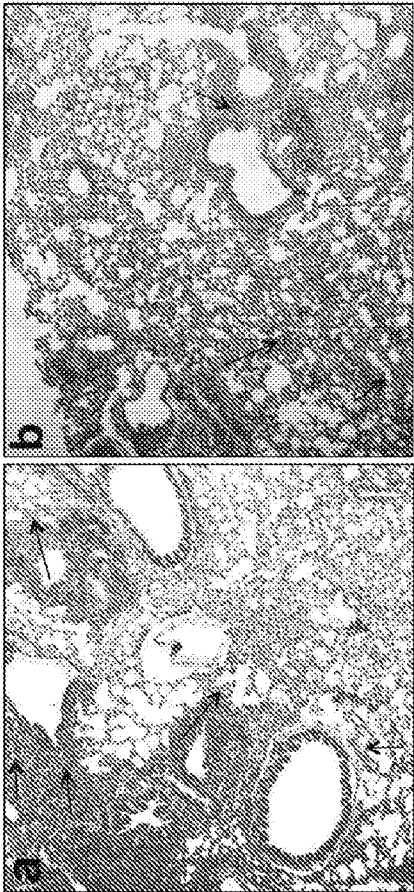
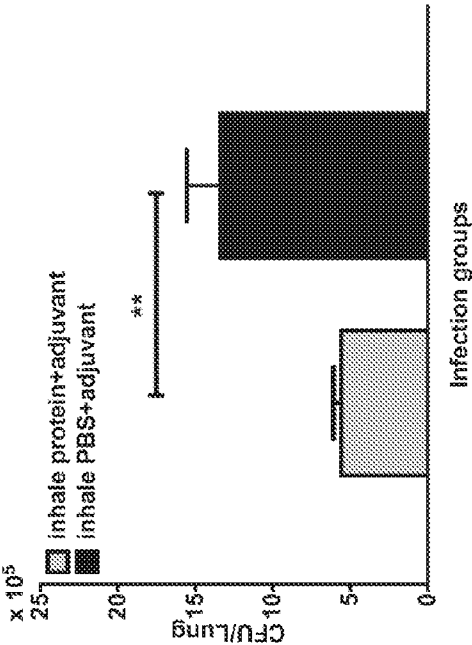


FIG. 5A



1

# IMMUNOGENIC COMPOSITIONS COMPRISING *MYCOBACTERIUM BOVIS* SURFACE PROTEINS AND USES THEREOF

## CROSS REFERENCE TO RELATED APPLICATIONS

This application is the U.S. National Stage of International Application No. PCT/US2019/014598, filed Jan. 22, 2019, which was published in English under PCT Article 21(2), which claims the benefit of U.S. Provisional Application No. 62/620,047, filed Jan. 22, 2018, which is herein incorporated by reference in its entirety.

## ACKNOWLEDGMENT OF GOVERNMENT SUPPORT

This invention was made with government support under 2017-67015-26638 awarded by National Institute of Food and Agriculture, USDA. The government has certain rights in the invention.

## FIELD

This disclosure concerns immunogenic compositions that include *Mycobacterium bovis* surface antigens and their use for eliciting an immune response and/or immunizing against *M. bovis*.

## BACKGROUND

Bovine tuberculosis (bTB) is a significant zoonotic threat that not only leads to significant animal losses associated with substantial economic consequences, but also creates a high risk for humans. The impact of bTB is estimated at US \$3 billion per year globally (Waters et al., *Vaccine* 30:2611-2622, 2012). Due to the fact that bovine tuberculosis is very challenging to diagnose and impractical to treat, vaccination is still the most feasible approach to control infection. Currently, there is no vaccine available for bTB. Although some countries still utilize the human *Mycobacterium tuberculosis* vaccine (bacillus Calmette-Guérin—BCG) to immunize cattle, current bTB incidences indicate that it does not protect animals from infection. In addition, BCG immunization prior to or following challenge with bTB shows poor protection and does not improve outcome (Buddle et al., *Tuberculosis (Edinb)* 99:120-127, 2016).

*Mycobacterium bovis*, the primary causative agent of bTB, is an intracellular bacterium and because of this, cellular mediated immunity plays a pivotal role in controlling the infection (Lyashchenko et al., *Infect Immun* 72:2462-2467, 2004). Although there is sufficient evidence on the protective role of humoral immunity against *M. tuberculosis* infection (Achkar and Casadevall, *Cell Host Microbe* 13:250-262, 2013), antibody responses have been ignored as a component in the protection against bTB. Antibodies generated against specific mycobacterial surface antigens, in addition to significant cell-mediated immunity, activate essential protective responses against intracellular mycobacterial pathogens (Kohama et al., *Vaccine* 26:924-932, 2008).

Infection with *M. bovis* primarily affects the respiratory tract, although gastrointestinal disease in both humans and animals is not uncommon. In most cases, the pathogen can be transmitted from an infected animal to a naïve host by aerosol. Once inhaled, *M. bovis* readily establishes infection in the alveolar space of the lung (Fulton et al., *Am J Respir*

2

*Cell Mol Biol* 22:333-343, 2000). Although macrophages are considered the primary host cells for *M. tuberculosis* infection, the chance that *M. bovis* will encounter the alveolar epithelial cells in the alveolus space is significantly greater than the chance the bacteria will encounter alveolar macrophages (Bermudez et al., *Infect Immun* 70:140-146, 2002). Alveolar epithelial cells are a critical first physiological barrier to prevent *M. bovis* entry into the bloodstream. Studies have demonstrated that lung mucosal cells play a significant role in the pathogenesis and immunity against tuberculosis infection (Nouailles et al., *J Clin Invest* 124:1268-1282, 2014; Harriff et al., *PLoS One* 9:e97515, 2014).

## SUMMARY

The present disclosure describes surface proteins expressed by *M. bovis* under conditions that mimic the natural environment in a host, and use of the identified surface proteins in immunogenic compositions for immunization against *M. bovis*.

Provided herein are immunogenic compositions that include at least two, at least three or at least four *M. bovis* surface proteins. In some embodiments, the surface proteins are selected from Mb1524, MbO1\_03198, phoY1\_1 and hbhA, or proteins having at least 90% identity to Mb1524, MbO1\_03198, phoY1\_1 and hbhA. In some examples, the immunogenic compositions further include a pharmaceutically acceptable carrier and/or an adjuvant. The immunogenic compositions can be formulated for a particular route of administration, for example formulated for inhaled or intramuscular administration.

Also provided are methods of eliciting an immune response against *M. bovis* or an *M. bovis* antigen in a subject, or immunizing a subject against *M. bovis*, by administering an immunogenic composition disclosed herein. In some embodiments, the immunogenic composition is administered intranasally or intramuscularly.

Further provided herein are collections of plasmids that encode at least two, at least three or at least four *M. bovis* surface proteins. In some embodiments, the plasmids include a nucleotide sequence encoding Mb1524, MbO1\_03198, phoY1\_1 or hbhA, or a nucleotide sequence having at least 90% identity to the Mb1524, MbO1\_03198, phoY1\_1 or hbhA coding sequence.

The present disclosure also provides kits that include an immunogenic composition or a collection of plasmids disclosed herein.

The foregoing and other objects and features, of the disclosure will become more apparent from the following detailed description, which proceeds with reference to the accompanying figures.

## BRIEF DESCRIPTION OF THE DRAWINGS

FIGS. 1A-1D: Binding and invasion assays of *M. bovis* BCG exposed to granuloma-like (pH 6.0, 0.3 M dextrose, anaerobic) and regular laboratory (pH 7.2, 20% O<sub>2</sub>) conditions. (FIG. 1A) Percentage of bacterial binding to A549 lung epithelial cells. (FIG. 1B) Percentage of bacterial binding to THP-1 macrophages. (FIG. 1C) Percentage of bacterial invasion of A549 cells. (FIG. 1D) Percentage of bacterial invasion of THP-1 cells. Results represent mean±standard error of three independent experiments. \*, P<0.05, and \*\*, P<0.01. Percentage of binding and invasion was calculated from the total *M. bovis* BCG inoculum added to cell monolayers at 0 minutes.

FIGS. 2A-2B: *M. bovis* BCG surface proteins expressed in different conditions. (FIG. 2A) Venn diagram showing the number of overlapping and unique bacterial surface proteins synthesized in granuloma-like and regular laboratory conditions. (FIG. 2B) Western blotting of *M. smegmatis* cell lysate overexpressing Mb1524, MbO1\_03198, phoY1\_1 and hbbA proteins using anti-His monoclonal antibody. Lane 1, pMV261-phoY1\_1; Lane 2, pMV261-MbO1\_03198; Lane 3, pMV261-hbbA; Lane 4, pMV261-Mb1524; Lane 5, pMV261 control. Arrows point to expressed target proteins.

FIGS. 3A-3B: Binding and invasion assays of A549 cells (FIG. 3A) and Madin-Darby bovine kidney (MDBK) cells (FIG. 3B) using *M. smegmatis* overexpressing pMV261-Mb1524, pMV261-MbO1\_03198, pMV261-phoY1\_1 and pMV261-hbbA constructs. Results represent mean  $\pm$  standard error of three independent experiments. \*,  $P<0.05$ , \*\*,  $P<0.01$ , \*\*\*,  $P<0.0001$  compared with the control pMV261construct of *M. smegmatis*.

FIGS. 4A-4D: Specific and total antibody responses in C57BL/6 mice ( $n=9$ /group) immunized either intranasally or intraperitoneally with a mixture of four recombinant *M. bovis* surface antigens or with *M. smegmatis* clones overexpressing the four antigens. All experimental groups of mice were intranasally challenged with  $10^7$  BCG pre-exposed to the granuloma-like conditions and two weeks later, antisera were collected for IgG and lungs were collected for IgA detection by ELISA. The results for specific IgG (FIG. 4A) and IgA (FIG. 4C) are presented as OD<sub>450</sub>, whereas total IgG (FIG. 4B) and IgA (FIG. 4D) levels were calculated in ng/ml for the individual mice, and the mean values for each group are provided. \*,  $P<0.05$ , \*\*  $P<0.01$ , \*\*\*,  $P<0.0001$ .

FIGS. 5A-5B: The number of viable bacteria in the lungs of BCG challenged mice. (FIG. 5A) The colony forming units (CFUs) of *M. bovis* BCG were determined in the lungs of control non-immunized (PBS inhalation) mice and recombinant protein mix immunized mice ( $n=9$ /group) that were challenged with *M. bovis* BCG. Mice were sacrificed two weeks after the bacterial inoculation to identify viable BCG. The results are expressed as CFUs for the individual mice and the mean values for each group are provided. \* $P<0.05$  (Student's t-test). \*\*,  $P<0.01$ . (FIG. 5B) Histopathology of lungs of mice challenged with *M. bovis* BCG after inhalation of PBS (a) or recombinant protein immunization (b). Arrows point to bacteria in the lung tissue.

### SEQUENCE LISTING

The nucleic and amino acid sequences listed in the accompanying sequence listing are shown using standard letter abbreviations for nucleotide bases, and three letter code for amino acids, as defined in 37 C.F.R. 1.822. Only one strand of each nucleic acid sequence is shown, but the complementary strand is understood as included by any reference to the displayed strand. The Sequence Listing is submitted as an ASCII text file, created on Jul. 20, 2020, 15.8 KB, which is incorporated by reference herein. In the accompanying sequence listing:

SEQ ID NO: 1 is the nucleotide sequence encoding *M. bovis* antigen Mb1524.

SEQ ID NO: 2 is the amino acid sequence of *M. bovis* antigen Mb1524 (GenBank Accession No. P63694).

SEQ ID NO: 3 is the nucleotide sequence encoding *M. bovis* antigen MbO1\_03198.

SEQ ID NO: 4 is the amino acid sequence of *M. bovis* antigen MbO1\_03198 (GenBank Accession No. CEJ37080).

SEQ ID NO: 5 is the nucleotide sequence encoding *M. bovis* antigen phoY1\_1.

SEQ ID NO: 6 is the amino acid sequence of *M. bovis* antigen phoY1\_1 (GenBank Accession No. CCC65907).

SEQ ID NO: 7 is the nucleotide sequence encoding *M. bovis* antigen hbbA.

SEQ ID NO: 8 is the amino acid sequence of *M. bovis* antigen hbbA (GenBank Accession No. WP 024456635).

SEQ ID NOs: 9-24 are oligonucleotide primer sequences.

### DETAILED DESCRIPTION

#### I. Abbreviations

BCG bacillus Calmette-Guérin  
bTB bovine tuberculosis  
CFU colony forming units  
ELISA enzyme-linked immunosorbent assay  
IP intraperitoneal  
MDBK Madin-Darby bovine kidney  
MOI multiplicity of infection

#### II. Terms and Methods

Unless otherwise noted, technical terms are used according to conventional usage. Definitions of common terms in molecular biology may be found in Benjamin Lewin, *Genes V*, published by Oxford University Press, 1994 (ISBN 0-19-854287-9); Kendrew et al. (eds.), *The Encyclopedia of Molecular Biology*, published by Blackwell Science Ltd., 1994 (ISBN 0-632-02182-9); and Robert A. Meyers (ed.), *Molecular Biology and Biotechnology: a Comprehensive Desk Reference*, published by VCH Publishers, Inc., 1995 (ISBN 1-56081-569-8).

In order to facilitate review of the various embodiments of the disclosure, the following explanations of specific terms are provided:

Adjuvant: A substance or vehicle that non-specifically enhances the immune response to an antigen (for example, a *M. bovis* antigen). Adjuvants can be used with the compositions disclosed herein, for example as part of a *M. bovis* vaccine composition provided herein. Adjuvants can include a suspension of minerals (alum, aluminum hydroxide, or aluminum phosphate) on which antigen is adsorbed; or water-in-oil emulsion in which antigen solution is emulsified in mineral oil (for example, Freund's incomplete adjuvant), sometimes with the inclusion of killed mycobacteria (Freund's complete adjuvant) to further enhance antigenicity. Another adjuvant is monophosphoryl lipid A (MPL), which is an immune-stimulating lipid. MPL can be combined with alum to produce the AS04 adjuvant, which is used in some approved vaccines, such as the human papillomavirus vaccine Cervarix. Another combination adjuvant is AS03, which combines  $\alpha$ -tocopherol, squalene and polysorbate 80 in an oil-in-water emulsion. Immunostimulatory oligonucleotides (such as those including a CpG motif) can also be used as adjuvants (for example, see U.S. Pat. Nos. 6,194,388; 6,207,646; 6,214,806; 6,218,371;

6,239,116; 6,339,068; 6,406,705; and 6,429,199), as well as poly(I:C), which is a synthetic double-stranded RNA that mimics a molecular pattern associated with viral infection. Adjuvants also include biological molecules, such as costimulatory molecules. Exemplary biological adjuvants include IL-2, RANTES, GM-CSF, TNF- $\alpha$ , IFN- $\gamma$ , G-CSF, LFA-3, CD72, B7-1, B7-2, OX-40L and 41 BBL. In one example the adjuvant is one or more a toll-like receptor (TLR) agonists, such as an agonist of TLR1/2 (which can be a synthetic ligand) (for example, Pam3Cys), TLR2 (for example, CFA, Pam2Cys), TLR3 (for example, poly(I:C, poly A:U), TLR4 (for example MPLA, Lipid A, and LPS),



TLR5 (for example flagellin), TLR7 (for example gardiquimod, imiquimod, loxoribine, Resiquimod®), TLR7/8 (for example, R0848), TLR8 (for example, imidazoquinolines, ssPolyU, 3M-012), TLR9 (for example, ODN 1826 (type B), ODN 2216 (type A), CpG oligonucleotides) and/or TLR11/12 (for example, profilin). In one example, the adjuvant is TiterMax® Gold Adjuvant (Sigma-Aldrich), which is a water-in-oil adjuvant containing a block copolymer (CRL-8300), squalene and sorbitan monooleate.

Administer: As used herein, administering a composition (such as one containing one or more *M. bovis* antigens) to a subject means to give, apply or bring the composition into contact with the subject. Administration can be accomplished by any of a number of routes, such as, for example, intramuscular, intranasal, pulmonary, topical, oral, subcutaneous, intraperitoneal, intravenous, intrathecal and intradermal.

Antigen or immunogen: A compound, composition, or substance that can stimulate the production of antibodies or a T-cell response in an animal, including compositions that are injected or absorbed into an animal. An antigen reacts with the products of specific humoral or cellular immunity, including those induced by heterologous immunogens.

Cell-mediated immunity: An immune response that does not involve antibodies, but rather involves the activation of phagocytes, natural killer (NK) cells, antigen-specific cytotoxic T-lymphocytes, and the release of various cytokines in response to an antigen. Historically, the immune system was separated into two branches—humoral immunity, for which the protective function of immunization could be found in the humor (cell-free bodily fluid or serum) and cellular immunity, for which the protective function of immunization was associated with cells. CD4<sup>+</sup> T cells or helper T cells provide protection against different pathogens. Cytotoxic T cells cause death by apoptosis without using cytokines, therefore in cell mediated immunity cytokines are not always present. Cellular immunity protects the body by activating antigen-specific cytotoxic T-lymphocytes that are able to induce apoptosis in body cells displaying epitopes of foreign antigen on their surface, such as virus-infected cells, cells with intracellular bacteria, and cancer cells displaying tumor antigens; activating macrophages and natural killer cells, enabling them to destroy pathogens; and stimulating cells to secrete a variety of cytokines that influence the function of other cells involved in adaptive immune responses and innate immune responses. Cell-mediated immunity is directed primarily at microbes that survive in phagocytes and microbes that infect non-phagocytic cells.

HbhA (heparin-binding hemagglutinin): A surface protein expressed by *M. bovis*. HbhA is a virulence factor that mediates bacterial binding to epithelial cells and other non-phagocytic cells. HbhA also plays a role in extrapulmonary dissemination during tuberculosis infection. The hbhA protein sequence is deposited under GenBank Accession No. WP\_024456635. Nucleotide and amino acid sequences of hbhA are set forth herein as SEQ ID NOs: 7 and 8, respectively.

Heterologous: Originating from separate genetic sources or species. For example, a peptide that is heterologous to an *M. bovis* protein originates from a species other than *M. bovis*. In some embodiments, the heterologous protein or peptide includes a protein tag, such as a His tag.

Immune response: A response of a cell of the immune system, such as a B-cell, T-cell, macrophage or polymorphonucleocyte, to a stimulus such as an antigen or vaccine (such as a *M. bovis* antigen or vaccine). An immune response can include any cell of the body involved in a host defense

response, including for example, an epithelial cell that secretes an interferon or a cytokine. An immune response includes, but is not limited to, an innate immune response or inflammation. As used herein, a protective immune response refers to an immune response that protects a subject from infection (prevents infection or prevents the development of disease associated with infection). Methods of measuring immune responses are well known in the art and include, for example, measuring proliferation and/or activity of lymphocytes (such as B or T cells), secretion of cytokines or chemokines, inflammation, antibody production and the like.

Immunize: To render a subject (such as a mammal) protected from an infectious disease (for example, bTB), such as by vaccination.

Immunogenic composition: A term used herein to mean a composition useful for stimulating or eliciting a specific immune response (or immunogenic response) in a subject. The immunogenic composition includes two or more *M. bovis* surface antigens. In some embodiments, the immunogenic response is protective or provides protective immunity, in that it enables the subject to better resist infection with or disease progression from the pathogen against which the immunogenic composition is directed. In some embodiments, an “effective amount” or “immune-stimulatory amount” of an immunogenic composition is an amount which, when administered to a subject, is sufficient to engender a detectable immune response. Such a response may comprise, for instance, generation of an antibody specific to one or more of the epitopes provided in the immunogenic composition. Alternatively, the response may comprise a T-helper or CTL-based response to one or more of the epitopes provided in the immunogenic composition. All three of these responses may originate from naïve or memory cells.

Isolated: An “isolated” biological component (such as a nucleic acid or protein) has been substantially separated or purified away from other biological components (such as cell debris, or other proteins or nucleic acids). Biological components that have been “isolated” include those components purified by standard purification methods. The term also embraces recombinant nucleic acids and proteins, as well as chemically synthesized nucleic acids or peptides.

MbO1\_03198: A surface protein expressed by *M. bovis*. MbO1\_03198 is a protein that contains the diacylglycerol kinase family enzyme motif involved in lipid transport and metabolism, and domains of transcriptional regulator XRE-family helix-turn-helix and transcription elongation factor GreA/GreB, C-term. It is disclosed herein that overexpression of MbO1\_03198 leads to increased binding to and invasion of mucosal cells. The MbO1\_03198 protein sequence is deposited under GenBank Accession No. CEJ37080. Nucleotide and amino acid sequences of MbO1\_03198 are set forth herein as SEQ ID NOs: 3 and 4, respectively.

Mb1524: A surface protein expressed by *M. bovis*. Mb1524 is a protein containing the conserved domain of the regulator of protease activity HflC, stomatin/prohibitin superfamily, whose function is unknown. It is disclosed herein that overexpression of Mb1524 leads to increased binding to and invasion of mucosal cells. The Mb1524 protein sequence is deposited under GenBank Accession No. P63694. Nucleotide and amino acid sequences of Mb1524 are set forth herein as SEQ ID NOs: 1 and 2, respectively.

*Mycobacterium bovis*: An intracellular bacterium that is the causative agent of bovine tuberculosis (bTB). *M. bovis* is related to *M. tuberculosis*, which causes TB in humans.

Bovine TB is a chronic infectious disease that can infect a broad range of mammalian hosts, including humans, cattle, bison, deer, llamas, pigs, goats, domestic cats, foxes, coyotes, possum and rodents. Infection with *M. bovis* can be spread by exhaled air (for example in aerosol droplets) or by contact with sputum, urine, feces or pus of an infected animal.

Pharmaceutically acceptable vehicles: The pharmaceutically acceptable carriers (vehicles) useful in this disclosure are conventional. *Remington: The Science and Practice of Pharmacy*, The University of the Sciences in Philadelphia, Editor, Lippincott, Williams, & Wilkins, Philadelphia, Pa, 21<sup>st</sup> Edition (2005) describes compositions and formulations suitable for pharmaceutical delivery of one or more immunogenic compositions, such as one or more *M. bovis* immunogenic compositions disclosed herein, and additional pharmaceutical agents.

PhoY1\_1 (phosphate-transport system transcriptional regulatory protein phoU homolog 1 phoY1): A surface protein expressed by *M. bovis*. It is disclosed herein that overexpression of phoY1\_1 on the surface of *M. bovis* helps the bacteria to better bind and invade epithelial cells. The phoY1\_1 protein sequence is deposited under GenBank Accession No. CCC65907. Nucleotide and amino acid sequences of phoY1\_1 are set forth herein as SEQ ID NOs: 5 and 6, respectively.

Preventing, treating or ameliorating a disease: "Preventing" a disease refers to inhibiting the full development of a disease. "Treating" refers to a therapeutic intervention that ameliorates a sign or symptom of a disease or pathological condition after it has begun to develop. "Ameliorating" refers to the reduction in the number or severity of signs or symptoms of a disease.

Purified: The term "purified" does not require absolute purity; rather, it is intended as a relative term. Thus, for example, a purified protein, nucleic acid or other compound is one that is isolated in whole or in part from naturally associated proteins and other contaminants. In certain embodiments, the term "substantially purified" refers to a protein, nucleic acid or other active compound that has been isolated from a cell, cell culture medium, or other crude preparation and subjected to fractionation to remove various components of the initial preparation, such as proteins, cellular debris, and other components.

Subject: Living multi-cellular vertebrate organisms, a category that includes both human and non-human mammals, such as non-human primates. In some examples, the subject is an animal that can be infected with *Mycobacterium bovis*, such as a bovine (including, for example, cattle, bison, buffalo and ox) or another susceptible animal, such as a human, non-human primate, elk, deer, goat, cat, dog, pig, badger or possum.

Therapeutically effective amount: A quantity of a specified agent sufficient to achieve a desired effect in a subject being treated with that agent. For example, this may be the amount of an immunogenic composition useful for eliciting an immune response in a subject and/or for preventing infection or disease caused by *M. bovis*. In one example, a therapeutically effective amount of an immunogenic composition is an amount sufficient to increase resistance to, prevent, ameliorate, and/or treat infection caused by *M. bovis* in a subject without causing a substantial cytotoxic effect in the subject. The effective amount of an immunogenic composition useful for increasing resistance to, preventing, ameliorating, and/or treating infection in a subject

will be dependent on, for example, the subject being treated, the manner of administration of the therapeutic composition and other factors.

Vaccine: A preparation of immunogenic material capable of stimulating an immune response, administered for the prevention, amelioration, or treatment of disease, such as an infectious disease. The immunogenic material may include an immunogenic composition disclosed herein. Vaccines may elicit both prophylactic (preventative) and therapeutic responses. Methods of administration vary according to the vaccine, but can include inoculation, ingestion, intranasal, intramuscular or other forms of administration. Vaccines may be administered with an adjuvant to enhance the immune response.

Unless otherwise explained, all technical and scientific terms used herein have the same meaning as commonly understood by one of ordinary skill in the art to which this disclosure belongs. The singular terms "a," "an," and "the" include plural referents unless context clearly indicates otherwise. "Comprising A or B" means including A, or B, or A and B. It is further to be understood that all base sizes or amino acid sizes, and all molecular weight or molecular mass values, given for nucleic acids or polypeptides are approximate, and are provided for description. Although methods and materials similar or equivalent to those described herein can be used in the practice or testing of the present disclosure, suitable methods and materials are described below. All publications, patent applications, patents, and other references mentioned herein are incorporated by reference in their entirety. In case of conflict, the present specification, including explanations of terms, will control. In addition, the materials, methods, and examples are illustrative only and not intended to be limiting.

### III. Overview of Several Embodiments

Disclosed herein is the identification of several surface proteins that are expressed by *M. bovis* during infection of a host. These surface antigens are also expressed on the form of *M. bovis* that is transmitted from an infected host to a new host. Four of the identified *M. bovis* antigens, Mb1524, Mb01\_03198, phoY1\_1 and hbhA, were further characterized and found to promote binding to and invasion of mucosal cells. Thus, the disclosed *M. bovis* surface proteins can be used, for example, in immunogenic compositions for immunization against *M. bovis*.

The present disclosure describes immunogenic compositions that include at least one, at least two, at least three or at least four *M. bovis* surface proteins. At least one, at least two, at least three or at least four of the surface proteins are selected from Mb1524 (e.g., SEQ ID NO: 2), Mb01\_03198 (e.g., SEQ ID NO: 4), phoY1\_1 (e.g., SEQ ID NO: 6), and hbhA (e.g., SEQ ID NO: 8), or proteins having at least 80%, at least 85%, at least 90%, at least 95%, at least 96%, at least 97%, at least 98% or at least 99% identity to Mb1524, Mb01\_03198, phoY1\_1 and hbhA.

Provided herein are immunogenic compositions that include at least one, at least two, at least three or at least four surface proteins from *M. bovis*. In some embodiments, the at least one, at least two, at least three or at least four surface proteins are selected from a protein comprising at least 80%, at least 85%, at least 90%, at least 95%, at least 96%, at least 97%, at least 98% or at least 99% sequence identity with the amino acid sequence of SEQ ID NO: 2; a protein comprising at least 80%, at least 85%, at least 90%, at least 95%, at least 96%, at least 97%, at least 98% or at least 99% sequence identity with the amino acid sequence of SEQ ID NO: 4; a protein comprising at least 80%, at least 85%, at least 90%, at least 95%, at least 96%, at least 97%, at least 98% or at

least 99% sequence identity with the amino acid sequence of SEQ ID NO: 6; and a protein comprising at least 80%, at least 85%, at least 90%, at least 95%, at least 96%, at least 97%, at least 98% or at least 99% sequence identity with the amino acid sequence of SEQ ID NO: 8.

In some embodiments, the immunogenic composition includes two surface proteins from *M. bovis*. In particular examples, the immunogenic composition includes a protein comprising the amino acid sequence of SEQ ID NO: 2 and a protein comprising the amino acid sequence of SEQ ID NO: 4. In other particular examples, the immunogenic composition includes a protein comprising the amino acid sequence of SEQ ID NO: 2 and a protein comprising the amino acid sequence of SEQ ID NO: 6. In other particular examples, the immunogenic composition includes a protein comprising the amino acid sequence of SEQ ID NO: 2 and a protein comprising the amino acid sequence of SEQ ID NO: 8. In other particular examples, the immunogenic composition includes a protein comprising the amino acid sequence of SEQ ID NO: 4 and a protein comprising the amino acid sequence of SEQ ID NO: 6. In other particular examples, the immunogenic composition includes a protein comprising the amino acid sequence of SEQ ID NO: 4 and a protein comprising the amino acid sequence of SEQ ID NO: 8. In other particular examples, the immunogenic composition includes a protein comprising the amino acid sequence of SEQ ID NO: 6 and a protein comprising the amino acid sequence of SEQ ID NO: 8.

In some embodiments, the immunogenic composition includes three surface proteins from *M. bovis*. In particular examples, the immunogenic composition includes a protein comprising the amino acid sequence of SEQ ID NO: 2, a protein comprising the amino acid sequence of SEQ ID NO: 4 and a protein comprising the amino acid sequence of SEQ ID NO: 6. In other particular examples, the immunogenic composition includes a protein comprising the amino acid sequence of SEQ ID NO: 2, a protein comprising the amino acid sequence of SEQ ID NO: 4 and a protein comprising the amino acid sequence of SEQ ID NO: 8. In other particular examples, the immunogenic composition includes a protein comprising the amino acid sequence of SEQ ID NO: 2, a protein comprising the amino acid sequence of SEQ ID NO: 6 and a protein comprising the amino acid sequence of SEQ ID NO: 8. In other particular examples, the immunogenic composition includes a protein comprising the amino acid sequence of SEQ ID NO: 4, a protein comprising the amino acid sequence of SEQ ID NO: 6 and a protein comprising the amino acid sequence of SEQ ID NO: 8.

In some embodiments, the immunogenic composition includes four surface proteins from *M. bovis*. In particular examples, the immunogenic composition includes a protein comprising the amino acid sequence of SEQ ID NO: 2, a protein comprising the amino acid sequence of SEQ ID NO: 4, a protein comprising the amino acid sequence of SEQ ID NO: 6 and a protein comprising the amino acid sequence of SEQ ID NO: 8.

In some embodiments, one or more of the surface proteins includes a heterologous peptide, such as a protein tag. The protein tag can include, for example, an affinity tag, an epitope tag, a fluorescent protein, an enzyme or a carrier protein. In particular examples, the protein tag is a histidine tag, chitin binding protein, maltose binding protein, glutathione-S-transferase, V5, c-myc, HA, FLAG, GFP or another well-known fluorescent protein.

In some embodiments, the immunogenic composition further includes a pharmaceutically acceptable carrier.

In some embodiments, the immunogenic composition further includes an adjuvant. In some examples, the adjuvant includes unmethylated CpG oligodeoxynucleotides (CpG ODNs). In some examples, the adjuvant comprises an oil-in-water adjuvant, such as an oil-in-water emulsion. In some examples, the water-in-oil adjuvant comprises squalene, a block copolymer (such as CRL-8300) and/or sorbitan monooleate. In specific examples, the adjuvant includes TiterMax® Gold Adjuvant (Sigma-Aldrich). In other examples, the adjuvant includes alum, such as aluminum phosphate or aluminum hydroxide. In specific non-limiting examples, the adjuvant is AS03 or AS04.

In some embodiments, the immunogenic composition is formulated for intranasal administration. In other embodiments, the immunogenic composition is formulated for intramuscular administration.

Also provided are methods of eliciting an immune response against *M. bovis* or an *M. bovis* antigen in a subject. In some embodiments, the method includes administering to the subject an immunogenic composition disclosed herein. Further provided are methods of immunizing a subject against *M. bovis* by administering to the subject an immunogenic composition disclosed herein. In some embodiments, the immunogenic composition is administered intranasally. In other embodiments, the immunogenic composition is administered intramuscularly. In some embodiments, the subject is a non-human animal. In some examples, the subject is a bovine subject, such as a cow.

The present disclosure also provides kits that include an immunogenic composition disclosed herein. In some embodiments, the kit further includes instructions for administration of the immunogenic composition and/or a description of the components of the immunogenic composition.

Further provided by the present disclosure are single plasmids or collections of plasmids that encode at least one, at least two, at least three or at least four *M. bovis* surface proteins. In some embodiments, the plasmids include a nucleotide sequence encoding Mb1524 (e.g., SEQ ID NO: 1), MbO1\_03198 (e.g., SEQ ID NO: 3), phoY1\_1 (e.g., SEQ ID NO: 5), or hbhA (e.g., SEQ ID NO: 7), or a nucleotide sequence having at least 80%, at least 85%, at least 90%, at least 95%, at least 96%, at least 97%, at least 98% or at least 99% identity to the Mb1524, MbO1\_03198, phoY1\_1 or hbhA coding sequence.

Provided herein is a plasmid that encodes a *M. bovis* surface antigen. In some embodiments, the surface antigen is encoded by a nucleotide sequence at least 80%, at least 85%, at least 90%, at least 95%, at least 96%, at least 97%, at least 98% or at least 99% identical to SEQ ID NO: 1, SEQ ID NO: 3, SEQ ID NO: 5 or SEQ ID NO: 7. In some examples, the plasmid further includes a heterologous sequence, such as a heterologous promoter or a sequence encoding a heterologous protein, for example a protein tag.

Also provided are collections of plasmids that include at least one, at least two, at least three or at least four plasmids encoding surface proteins from *M. bovis*. In some embodiments, the collection of plasmids includes at least two plasmids selected from a plasmid comprising a nucleotide sequence at least 80%, at least 85%, at least 90%, at least 95%, at least 96%, at least 97%, at least 98% or at least 99% identical to SEQ ID NO: 1, a plasmid comprising a nucleotide sequence at least 80%, at least 85%, at least 90%, at least 95%, at least 96%, at least 97%, at least 98% or at least 99% identical to SEQ ID NO: 3, a plasmid comprising a nucleotide sequence at least 80%, at least 85%, at least 90%, at least 95%, at least 96%, at least 97%, at least 98% or at

least 99% identical to SEQ ID NO: 5 and a plasmid comprising a nucleotide sequence at least 80%, at least 85%, at least 90%, at least 95%, at least 96%, at least 97%, at least 98% or at least 99% identical to SEQ ID NO: 7.

In some embodiments, the collection of plasmids includes two plasmids that each encode a different *M. bovis* surface antigen. In some examples, the collection includes a plasmid comprising the nucleotide sequence of SEQ ID NO: 1 and a plasmid comprising the nucleotide sequence of SEQ ID NO: 3. In other examples, the collection includes a plasmid comprising the nucleotide sequence of SEQ ID NO: 1 and a plasmid comprising the nucleotide sequence of SEQ ID NO: 5. In other examples, the collection includes a plasmid comprising the nucleotide sequence of SEQ ID NO: 1 and a plasmid comprising the nucleotide sequence of SEQ ID NO: 7. In other examples, the collection includes a plasmid comprising the nucleotide sequence of SEQ ID NO: 3 and a plasmid comprising the nucleotide sequence of SEQ ID NO: 5. In other examples, the collection includes a plasmid comprising the nucleotide sequence of SEQ ID NO: 3 and a plasmid comprising the nucleotide sequence of SEQ ID NO: 7. In other examples, the collection includes a plasmid comprising the nucleotide sequence of SEQ ID NO: 5 and a plasmid comprising the nucleotide sequence of SEQ ID NO: 7.

In some embodiments, the collection of plasmids includes three plasmids that each encode a different *M. bovis* surface antigen. In some examples, the collection includes a plasmid comprising the nucleotide sequence of SEQ ID NO: 1, a plasmid comprising the nucleotide sequence of SEQ ID NO: 3 and a plasmid comprising the nucleotide sequence of SEQ ID NO: 5. In other examples, the collection includes a plasmid comprising the nucleotide sequence of SEQ ID NO: 1, a plasmid comprising the nucleotide sequence of SEQ ID NO: 3 and a plasmid comprising the nucleotide sequence of SEQ ID NO: 7. In other examples, the collection includes a plasmid comprising the nucleotide sequence of SEQ ID NO: 1, a plasmid comprising the nucleotide sequence of SEQ ID NO: 5 and a plasmid comprising the nucleotide sequence of SEQ ID NO: 7. In other examples, the collection includes a plasmid comprising the nucleotide sequence of SEQ ID NO: 3, a plasmid comprising the nucleotide sequence of SEQ ID NO: 5 and a plasmid comprising the nucleotide sequence of SEQ ID NO: 7.

In some embodiments, the collection includes four plasmids that each encode a different *M. bovis* surface antigen. In some examples, the collection includes a plasmid comprising the nucleotide sequence of SEQ ID NO: 1, a plasmid comprising the nucleotide sequence of SEQ ID NO: 3, a plasmid comprising the nucleotide sequence of SEQ ID NO: 5 and a plasmid comprising the nucleotide sequence of SEQ ID NO: 7.

In some examples, at least one, at least two, at least three or at least four of the plasmids of the collection further include a heterologous sequence, such as a heterologous promoter or a sequence encoding a heterologous protein, for example a protein tag.

Further provided herein are kits that include a plasmid or a collection of plasmids disclosed herein. In some embodiments, each plasmid is in a separate container. In some examples, the kit further includes transfection reagents, cell culture media, instructions for protein expression and/or a description of the components of the plasmid or plasmids.

IV. BCG Antigens and Polynucleotides

Bovine tuberculosis (bTB) is a highly transmissible infection and remains of great concern as a zoonosis. The worldwide incidence of bTB is rising, creating a potential

reservoir and increased infection risk for humans and animals. Thus, a need exists for an effective vaccine against bTB.

Mucosal vaccination with BCG using the natural route of infection has been a challenge (Manjaly Thomas et al., *Trans R Soc Trop Med Hyg* 109:175-181, 2015). Despite this, it has been shown that vaccination with BCG leads to the generation of weak effector memory T cells and tissue resident memory cells. The response lacks mucosal chemokine receptors (Beverley et al., *Mucosal Immunol* 7:20-26, 2014). Studies of the mucosal vaccine against *M. tuberculosis* in humans indicates feasibility of the vaccine to prevent infection (Caetano et al., *J Biomed Nanotechnol* 10:2295-2316, 2014; Diogo and Reljic, *Immunotherapy* 6:1001-1013, 2014). Although there is a high degree of similarity between *M. bovis* and *M. tuberculosis* (Gamier et al., *Proc Natl Acad Sci USA* 100:7877-7882, 2003), mucosal vaccination of animals against *M. bovis* infection has not been previously reported.

To identify novel surface antigens of *M. bovis* as inducers of protective immunity, surface proteomics of the *M. bovis* BCG strain cultured under granuloma-like conditions (to mimic the natural environment) was investigated. The present disclosure demonstrates that bacteria exposed to a biologically relevant environment have greater ability to bind and invade host cells than bacteria incubated under regular laboratory conditions. A total of 957 surface-exposed proteins were identified on BCG cultured under standard laboratory conditions, whereas 1097 proteins were expressed by bacteria under the granuloma-like condition. The overexpression of four of these surface proteins, Mb1524, MbO1\_03198, PhoY1 and HbhA, on *M. smegmatis* led to increased binding and invasion of mucosal cells. Immunogenicity of purified recombinant proteins as well as *M. smegmatis* overexpressing these surface antigens was evaluated in mice. Significant levels of specific IgA and IgG antibodies were observed in the recombinant protein immunized groups by both inhalation and intraperitoneal (IP) routes but only IP delivery induced high total IgA and IgG levels. Significant differences in antibody levels in the *M. smegmatis* group that overexpressed surface antigens were not detected. A significant reduction of bacterial load in lungs was observed only in mice immunized with the inhaled recombinant proteins. This data indicates that administration of BCG recombinant protein via inhalation leads to activation of mucosal immunity and confers protection against *M. bovis* BCG infection.

The nucleotide and amino acid sequences of the four characterized *M. bovis* surface antigens are provided below and set forth herein as SEQ ID NOs: 1-8.

#### Mb1524 nucleotide sequence

(SEQ ID NO: 1)

```

GTGCAAGGAGCCGTTGCTGGTCTGGTGTCTTCTGGCCGTCCTGGTGA
TTTTCGCCATCATCGTGGTGGCCAAGTCGGTGGCGCTGATCCCGCA
GGCGGAGGCCGCGGTGATCGAGCGGCTGGGTGCTATAGTCGTACG
GTCAGTGGGCAGTTGACGCTGTTGGTGCCGTTTCATCGACCGCGTCC
GGGCTCGGGTGGACCTGCGCGAGCGGGTGGTGTCTTCCGCCGCA
ACCGGTGATCACCGAGGACAACCTGACGCTGAACATCGACACCGTC
GTCTACTTCCAGGTGACCGTTCCGAGGCGGCGGTGTACGAGATCA
GCAATTACATCGTCGGGGTGAACAGCTCACCACCACCACCCCT

```

13

-continued

GCGCAACGTTGTGCGCGGGATGACGCTGGAGCAGACGTTGACCTCG  
 CGTGACCAGATCAACGCCCAGCTGCGCGGGTTCGATGAGGCGA  
 CCGGCCGCTGGGGTCTGCGGGTGGCGCGGGTGGAGCTGCGCAGCAT  
 CGATCCGCCGCCGTCGATTGAGGCGTCGATGAAAAGCAGATGAAG  
 GCCGACCGGGAGAAGCGAGCGATGATTCTGACCGCGAAGGTACCC  
 GGGAGCGCGCATAAACAGGCCGAGGGGCAAAGCAGGCGCAGAT  
 CCTGGCCGCCGAGGGCGCCAGCAGGCGCGATCTTGCTGCTGAG  
 GCCGATCGGCAGTCTCGGATGCTGCGCGCTCAGGGTGAAGCGCGCG  
 CGGCCTACCTGCAGGCGCAAGGGCAGGCCAAGGCCATCGAGAAGAC  
 GTTCGCCCGCATCAAGGCTGGCCGGCCACCCCGAGATGCTGGCC  
 TACCAATACCTGCAGACGCTGCCGAGATGGCGCGTGGGACGCCA  
 ACAAGGTATGGTGGTGGCCAGCGACTTCAACGCGCACTGCAGGG  
 TTCACAGGCTGCTGGCAAGCCGGTGAGGACGGGGTGTTCGGT  
 TCAGAGCGTCCCGGTGCAAGACCAGCCCAAGCAGCGGCCGACGG  
 TGACGACGCCGAGGTGCGCGGCTGTTCTCCACCGATACCGACCCG  
 TCGATCGCTCGGGCGGTGGCTACAGCCGAGGCGATAG  
 Mb1524 amino acid sequence (SEQ ID NO: 2)  
 MQGAVAGLVFLAVLVIFAIIVVAKSVALIPQAEAAVIERLGRYSRT  
 VSGQLTLLVPFIDRVRARVDLRERVVSEPPQPVITEDNLTNIDTV  
 VYEQVTPQAAVYEISNYIVGVEQLTTTTLRNVVGGMTLEQLTSR  
 DQINQLRGVLDEATGRWGLRVARVELRSIDPPPSIQASMEKQMK  
 DREKRAMILTAEGTREAAIKQAEQKQQAQILAAEGAKQAAILAAEA  
 DRQSRMLRAQGERAAAYLQAQQAIAIEKTFAAIKAGRPTPEMLAY  
 QYLQTLPEMARGDANKVWVPSDFNAALQGFTRLLGKPGEDGVFRF  
 EPSPVEDQPKHAADGDDAEVAGWFSTDTDPSIARAVATAEAIARKP  
 VEGSLGTPPRLTQ  
 MB01\_03198 nucleotide sequence (SEQ ID NO: 3)  
 GTGGACACAACCTGTCGCTACCATGATCAGCAAATACATACAGATAA  
 CCGTTTGTCTTTGGAGCCCGGTGGAGGTACATCGATGAGCAGAC  
 GTTCGCTGCCCGCTGAACCGCTGTTTCGACACGCTTTATCCGCC  
 GGACGCGGGCCACATACCTCCGCGGAGGTGATCGCGCGCTCAAGG  
 CAGAGGGCATCACGATGTCGGCTCCCTACCTATCACAGCTACGCTC  
 AGGAAACCGTACGAACCCATCGGGGGCGACCATGGCCGCCCTGGCC  
 AACTTCTTCCGCATCAAGGCGGCTACTTCACCGACGACGAGTACT  
 ACGAAAAGCTCGACAAGGAATTGAGTGGCTGTGCACGATGCGCGA  
 CGACGGCGTGCAGCGGATCGCGCAGCGGGCCACGGTTGCCCTCC  
 GCGGCGCAGCAGAAGGTGTTGGACCGGATCGACGAGCTGCGGCGTG  
 CCGAAGGGATCGACGCTTAG

14

-continued

MB01\_03198 amino acid sequence (SEQ ID NO: 4)  
 5 MDTTVATMISKYIQITVCSWSPVEVTSMTTFAARLNRLFDTVYPP  
 GRGPHTSAEVIAALKAEGITMSAPYLSQLRSGNRNTPSGATMAALA  
 NFFRIKAAAYFTDDEYYEKLDKELQWLCTMRDDGVRRIAQRAHGLPS  
 AAQQKVLDRIDELRRAEGIDA  
 10 phoY1\_1nucleotide sequence (SEQ ID NO: 5)  
 ATGCGGACGGTCTATCACCAGCGGCTAACCGAGTTGGCCGACGAT  
 TGGGAGAGATGTGCAGCCTGGCCGGGATAGCGATGAAACGCGCAAC  
 15 GCAGGCTCTGCTCGAGGCCGACATTGGCGCCGCTGAACAAGTAATC  
 CGTGACCATGAGCGGATCGTGGCGATGCGAGCCCAAGTCGAAAAGG  
 AAGCGTTCGCGCTGCTGGCGTTGCAACATCCGGTGTCCGGCGAGCT  
 20 GCGGGAATCTTCAGTGGGTGCAGATCATCGCCGACACCGAGCGC  
 ATGGGTGCGTTGGCTGTGCATATTGCCAAGATCACCCGACGCGAGT  
 ATCCGAACCAGGTGCTTCCTGAGGAAGTTCGCAACTGCTTCGCCGA  
 25 CATGGCGAAGGTGGCAATCGCGTTGGGTGACAGTGAAGACAAGTG  
 CTGGTGAACCGTGACCCGAGGAAGCCGCGCAACTGCACGATCGTG  
 ACGACGCGATGGATGACCTGCATAGGCATTGTCTGAGCGTGTGTAT  
 30 AGATCGAGAATGGCGGCACGGCGTTTCGCGTTCGGTGTGGAACGGCG  
 TTGCTGGGTGCTTTCTTTGAGCGCTTCGCCGACACGCTGTGGAAG  
 TGGGCCGCCCGCTCATCTTCATGGTCACCGGGTGTACCGACCGA  
 35 GGACGAGATTTCCACTTACTGA  
 phoY1\_1 amino acid sequence (SEQ ID NO: 6)  
 MRTVYHQRLTELAGRLGEMCSLAGIAMKRATQALLLEADIGAAEQVI  
 40 RDHERIVAMRAQVEKEAFALLALQHPVSGELREIFSAVQIIADTER  
 MGALAVHIAKITREYPNQVLPPEVRNCFADMAKVAIALGDSARQV  
 LVNRDPQEAALHDDRDDAMDDLHRHLLSVLIDREWRHGVVRGVETA  
 45 LLGRPFERFADHAVEVGRRVIPMVTGVLPTEDISTY  
 hbhA nucleotide sequence (SEQ ID NO: 7)  
 ATGGTGAAAACCTCGAACATTGATGACATCAAGGCTCCGTTGCTTG  
 50 CCGCGCTTGGAGCGGCCGACCTGGCCTTGGCCACTGTCAACGAGTT  
 GATCACGAACCTGCGTGAGCGTGCGGAGGAGACTCGTACGGACACC  
 CGCAGCCGGGTGAGGAGAGCCGCTGCTCGCCTGACCAAGCTGCAGG  
 55 AAGATCTGCCCCGAGCAGCTACCGAGCTGCGTGAGAAGTTCACCGC  
 CGAGGAGCTGCGTAAGGCCCGCCGAGGGCTACCTCGAGGCGCGACT  
 AGCCGGTACAACGAGCTGGTCGAGCGCGGTGAGGCCGCTCTAGAGC  
 60 GGCTGCGCAGCCAGCAGAGCTTCGAGGAAGTGTGCGCGCGCGCCGA  
 AGGCTACGTGGACAGGCGGTGGAGTTGACCCAGGAGCGTGGGT  
 ACGGTGCGATCGCAGACCCGCGCGGTGCGTGAGCGTGCCGCCAAGC  
 65 TGGTGGCATCGAGCTGCCTAAGAAGGTGCTCCGCCAAGAAGGC

-continued

CGCTCCGGCCCAAGAAGGCCCTCCGGCCCAAGAAGGCCGGCCCAAG

AAGGCGCCCGCAAGAAGGCCGGCCCAAGAA

bbhA amino acid sequence

(SEQ ID NO: 8)

MAENSNIDDIKAPLLAALGAADLALATVNELITNLRRAEETRTDT

RSRVEESRARLTKLQEDLPEQLTELREKFTAEELRKAAGYLEAAT

SRYNELVERGEAALERLSQQSFEEVSARAEGYVDQAVELTQEALG

TVASQTRAVGERAAKLVGIELPKKAAPAKKAAPAKKAAPAKKAAK

KAPAKKAAAK

## V. Administration of Immunogenic Compositions

The disclosed compositions can be administered to a subject by any of the routes normally used for introducing immunogenic compositions (such as vaccines) into a subject. Methods of administration include, but are not limited to, intradermal, intramuscular, intraperitoneal, parenteral, intravenous, subcutaneous, mucosal, vaginal, rectal, intranasal, inhalation or oral. Parenteral administration, such as subcutaneous, intravenous or intramuscular administration, is generally achieved by injection. Injectables can be prepared in conventional forms, either as liquid solutions or suspensions, solid forms suitable for solution or suspension in liquid prior to injection, or as emulsions. Injection solutions and suspensions can be prepared from sterile powders, granules, tablets, and the like. Administration can be systemic or local.

The immunogenic compositions disclosed herein can be administered with at least one pharmaceutically acceptable carrier. Pharmaceutically acceptable carriers are determined in part by the particular composition being administered, as well as by the particular method used to administer the composition. Accordingly, there is a wide variety of suitable formulations of pharmaceutical compositions of the present disclosure. Pharmaceutically acceptable carriers include, but are not limited to, saline, buffered saline, dextrose, water, glycerol, sesame oil, ethanol, and combinations thereof. The composition can also contain conventional pharmaceutical adjunct materials such as, pharmaceutically acceptable salts to adjust the osmotic pressure, buffers, preservatives and the like. The carrier and composition can be sterile, and the formulation suits the mode of administration. The composition can also contain minor amounts of wetting or emulsifying agents, or pH buffering agents. The composition can be a liquid solution, suspension, emulsion, tablet, pill, capsule, sustained release formulation, or powder.

Preparations for parenteral administration include sterile aqueous or non-aqueous solutions, suspensions, and emulsions. Examples of non-aqueous solvents are propylene glycol, polyethylene glycol, vegetable oils such as olive oil, and injectable organic esters such as ethyl oleate. Aqueous carriers include water, alcoholic/aqueous solutions, emulsions or suspensions, including saline and buffered media. Parenteral vehicles include sodium chloride solution, Ringer's dextrose, dextrose and sodium chloride, lactated Ringer's, or fixed oils. Intravenous vehicles include fluid and nutrient replenishers, electrolyte replenishers (such as those based on Ringer's dextrose), and the like. Preservatives and other additives may also be present such as, for example, antimicrobials, anti-oxidants, chelating agents, and inert gases and the like.

Some of the compositions may potentially be administered as a pharmaceutically acceptable acid- or base-addition

salt, formed by reaction with inorganic acids such as hydrochloric acid, hydrobromic acid, perchloric acid, nitric acid, thiocyanic acid, sulfuric acid, and phosphoric acid, and organic acids such as formic acid, acetic acid, propionic acid, glycolic acid, lactic acid, pyruvic acid, oxalic acid, malonic acid, succinic acid, maleic acid, and fumaric acid, or by reaction with an inorganic base such as sodium hydroxide, ammonium hydroxide, potassium hydroxide, and organic bases such as mono-, di-, trialkyl and aryl amines and substituted ethanolamines.

In some embodiments, the immunogenic compositions provided herein are formulated for mucosal vaccination, such as oral, intranasal, pulmonary, rectal or vaginal administration. In a specific example, this is achieved by intranasal administration. For example, the disclosed compositions can include one or more biodegradable, mucoadhesive polymeric carriers. Polymers such as polylactide-co-glycolide (PLGA), chitosan (for example in the form of chitosan nanoparticles, such as N-trimethyl chitosan (TMC)-based nanoparticles), alginate (such as sodium alginate) and carbopol can be included. In one example the composition includes one or more hydrophilic polymers, such as sodium alginate or carbopol. In one example, the composition includes carbopol, for example in combination with starch. In one example, the composition is formulated as a particulate delivery system used for nasal administration. Thus, the composition can include liposomes, immune-stimulating complexes (ISCOMs) and/or polymeric particles. The compositions can also include one or more lipopeptides of bacterial origin, or their synthetic derivatives, such as Pam3Cys, (Pam2Cys, single/multiple-chain palmitic acids and lipoamino acids (LAAs). The compositions can also include one or more adjuvants, such as one or more of CpG oligodeoxynucleotides (CpG ODN), Flt3 ligand, and monophosphoryl lipid A (MLA). In one example, the adjuvant includes TiterMax® Gold Adjuvant (Sigma-Aldrich).

The disclosed compositions can be administered as a single dose or as multiple doses (for example, boosters). In some examples, the first administration is followed by a second administration. For example, the second administration can be with the same, or with a different *M. bovis* immunogenic composition than the first composition administered (for example, greater or fewer *M. bovis* antigens, or a different group of *M. bovis* antigens). In a specific example, the second administration is with the same immunogenic composition as the first composition administered. In another specific example, the second administration is with a different composition than the first composition administered.

In some examples, the immunogenic compositions are administered as multiple doses, such as 2, 3, 4, 5, 6, 7, 8, 9 or 10 doses (such as 2-3 doses). In such examples, the timing between the doses can be at least 1 week, at least 2 weeks, at least 3 weeks, at least 4 weeks, at least 6 weeks, at least 8 weeks, at least 12 weeks, at least 2 months, at least 3 months, at least 4 months, at least 5 months, at least 6 months, at least 1 year, at least 2 years or at least 5 years, such as 1-4 weeks, 2-3 weeks, 1-6 months, 2-4 months, 1 week, 2 weeks, 3 weeks, 4 weeks, 5 weeks, 6 weeks, 7 weeks, 8 weeks, 9 weeks, 10 weeks, 12 weeks, 1 month, 2 months, 3 months, 4 months, 5 months, 6 months, 1 year, 2 years, 5 years or 10 years, or combinations thereof (such as where there are at least three administrations, wherein the timing between the first and second, and second and third doses, can be the same or different).

The dose administered to a subject in the context of the present disclosure should be sufficient to induce a beneficial

therapeutic response in a subject over time, or to inhibit or prevent *M. bovis* infection and/or the development of bTB. The dose required can vary from subject to subject depending on the species, age, weight and general condition of the subject, the severity of the infection being treated, the particular composition being used and its mode of administration. An appropriate dose can be determined by one of ordinary skill in the art using only routine experimentation.

The following examples are provided to illustrate certain particular features and/or embodiments. These examples should not be construed to limit the disclosure to the particular features or embodiments described.

## EXAMPLES

### Example 1

#### Materials and Methods

This example describes the materials and experimental procedures used for the studies described in Example 2.

#### Bacteria

*Mycobacterium bovis* BCG Pasteur and *Mycobacterium smegmatis* mc<sup>2</sup> 155 strains were cultured on Middlebrook 7H10 agar supplemented with 10% oleic acid, albumin, dextrose, and catalase to log phase (Hardy Diagnostics, Santa Maria, Calif.). Prior to the assays, the BCG Pasteur strain was resuspended in 2 ml of Hanks' balanced salt solution (HBSS) and passed through a 23-gauge needle 10 times. After a 10-minute rest, the top 1 ml was adjusted to McFarland standard 2 (approximately 3×10<sup>8</sup> cells/ml) and used as the inoculum. The inoculum was observed under the microscope to ensure dispersal of the sample. In addition, serial dilutions were plated for CFU reads to calculate exact concentration of the inoculum. Viability of BCG was determined by the LIVE-DEAD® assay (Molecular Probes, Eugene, Oreg.).

#### Cell Culture

A549 human type II alveolar epithelial cells, MDBK cells and THP-1 cells were purchased from ATCC. A549 cells and MDBK cells were maintained in DMEM supplemented with 10% heat-inactivated fetal bovine serum. A total of 10<sup>5</sup> cells were added to each well of a 24-well tissue culture plate. Human mononuclear phagocyte THP-1 cells were cultured in RPMI-1640 medium supplemented with 10% heat-inactivated fetal bovine serum. THP-1 cells were treated with 20 ng/ml phorbol 12-myristate 13-acetate (PMA, Sigma) and seeded in tissue culture plates for 24 hours to allow for maturation. The next day, monolayers were replenished with fresh RPMI-1640 medium and rested for an additional 48 hours. Cells were seeded at 90% confluence.

#### Environmental Conditions

BCG were incubated in two different conditions: (1) regular laboratory culture condition: 37° C., 20% O<sub>2</sub> and pH 7.2; and (2) granuloma-like condition: increased osmolarity in 7H9 broth supplemented with 0.3 M dextrose and no oxygen. An oxygen deficient condition was obtained in an anaerobic jar (VWR) with pH 6.0 at 37° C. After 24 hours of incubation, bacteria were washed at 4° C., re-suspended in HBSS, passed through a 23-gauge needle 10 times and used for further assays.

#### Invasion and Binding Assay

A549 cells and MDBK cells were infected with live BCG at a multiplicity of infection (MOI) of 10 bacteria per host cell for 30 minutes or 1 hour and either incubated at 4° C. for the binding or 37° C. for the invasion assay. The cell monolayers were gently washed three times with PBS and

then permeabilized with 0.1% Triton X-100 for 15 minutes. Cell lysates were plated onto 7H10 agar plates and bacterial CFUs were quantified after three weeks of incubation.

#### Biotin Labeling and Purification of BCG Surface Proteins

*M. bovis* BCG culture from different conditions were resuspended in 1 mg of Sulfo-NHS-LC-biotin (Pierce, Rockford, Ill.) reconstituted in 1 ml HBSS. Bacteria were biotin labeled for 30 minutes at 4° C. with gentle agitation. The unbound Sulfo-NHS-LC-biotin was inactivated and removed by washing bacteria three times with 10 mM glycine in HBSS. Labeled bacteria were resuspended in the guanidinium lysis buffer (10 mM EDTA, 2 mM EGTA, 0.1% Tween-20, 6 mM guanidinium-HCl, in PBS, pH 7.2) and disrupted by bead-milling machine using 100-μm glass beads (Sigma, St. Louis, Mo.). Samples were cleared by centrifugation at 15,000 rpm for 5 minutes. The supernatants were processed for isolation of biotinylated proteins out of the total protein sample by affinity purification with magnetic streptavidin-coated C1 Dynabeads (Invitrogen). Briefly, aliquots of 1.5 ml protein sample was incubated for 1 hour at 23° C. with 80 μl of C1 Dynabeads and microcentrifuged. The beads were washed twice with the guanidinium lysis buffer followed by washing with 0.05% Tween-20 in PBS (pH 7.2). Beads were resuspended in 35 μl of 1% SDS supplemented with 10 mM EDTA in H<sub>2</sub>O and incubated at 65° C. for 10 minutes. Forty-five μl of 2× Laemmli buffer was added to each sample, boiled for 10 minutes and then cleared by centrifugation 2,000 rpm for 10 minutes. Biotinylated proteins were visualized by SDS-PAGE.

#### Overexpression of *M. bovis* BCG Proteins in *M. smegmatis*

*M. bovis* BCG selected genes were amplified using Fidel iTaq PCR Master Mix (Affymetrix, Santa Clara, Calif.) using the primers listed in the Table 1. The 6xHis tag was incorporated into the primers. PCR-generated fragments were cloned into the mycobacterial shuttle vector pMV261 containing HSP60 promoter and kanamycin resistant marker. The resulting plasmids were propagated in *Escherichia coli* DH10B and then electroporated into *M. smegmatis* mc<sup>2</sup> 155. Transformants were selected on 50 μg/ml of kanamycin containing Middlebrook 7H10 agar plates and screened by PCR for the kanamycin gene. Protein expression in *M. smegmatis* was confirmed by Western Blotting using the anti-HIS probe antibody.

TABLE 1

Primers used for construction of <i>M. smegmatis</i> clones overexpressing <i>M. bovis</i> BCG surface antigens in the pMV261 vector			
Genes	Primers	SEQ ID NO:	
Mb1524	5' - TTTTGAATTCATCATCATCATC ATCAAGGAGCCGTGCT-3'	9	
	5' - TTTTGTGCGACCTATTGAGTCAACCTG GGGG-3'	10	
Mb01_03198	5' - TTTTGAATTCATCATCATCATCATC ATGACACAACCTGTC-3'	11	
	5' - TTTTGTGCGACCTAAGCGTCGATCCC-3'	12	
phoY1_1	5' - TTTTGAATTCATCATCATCATCATC ATCGGACGGTCTAT-3'	13	
	5' - TTTTGTGCGACTCAGTAAGTGGAATC TCGTCCT-3'	14	

TABLE 1-continued

Primers used for construction of <i>M. smegmatis</i> clones overexpressing <i>M. bovis</i> BCG surface antigens in the pMV261 vector		
Genes	Primers	SEQ ID NO:
HBHA	5'-TTTTTGAATTCCATCATCATCATCATC	15
	ATGCTGAAACTCGAAC-3'	
	5'-TTTTTGTGCGACCTACTTCTGGGTGACC	16
	TTCTT-3'	

#### Expression and Purification of *M. Bovis* BCG Recombinant Proteins

*M. bovis* BCG selected genes were amplified using Fidel-Taq PCR Master Mix (Affymetrix, Santa Clara, Calif.) using the primers listed in the Table 2. The PCR-generated fragments were cloned into a pET6xHN-N vector encoding ampicillin resistance. The resulting plasmids were transformed into B121 (DE3) cells and transformant colonies were selected on LB agar plates containing 100 µg/ml of ampicillin. Protein expression in *E. coli* was confirmed by Western Blotting using the anti-HIS probe antibody. Briefly, samples of 150 mg of bacteria were harvested and resuspended in 700 µl 0.5%SDS with 0.5% protease inhibitor cocktail (Sigma). Bacteria were mechanically disrupted in a bead-milling machine with 0.1 mm silica beads (6 cycles, 20 seconds each at max speed). Lysates were centrifuged at 12,000 g for 5 minutes and supernatants were mixed with Laemmli buffer (+5% BME). The remaining pellets were also processed and resuspended in 200 µl denaturing buffer (500 mM NaCl, 7 M urea, 20 mM Tris-HCl, 10 mM imidazole) and Laemmli buffer (+5% BME). Both soluble and non-soluble samples were boiled for 10 minutes, run on 12% Mini-PROTEAN precast SDS-PAGE gel (Biorad, Hercules, Calif.) and transferred to a nitrocellulose membrane. After a 1-hour exposure with the blocking buffer (4% BSA with PBS-Tween) at room temperature, the membranes were further incubated with anti-HIS monoclonal antibody for 1 hour followed by incubation with IRDye-680 streptavidin (Licor, Lincoln, Nebr.) according to the manufacturer's protocol. Biotinylation patterns were visualized on an Odyssey Scanner (Licor).

TABLE 2

Primers used for construction of recombinant <i>M. bovis</i> BCG surface antigens in the pET6xHN_N vector of <i>E. coli</i>		
Genes	Primers	SEQ ID NO:
Mb1524	5'-TTTTTGTGCGACCAAGGAGCCGTTGCT-3'	17
	5'-TTTTTGAATTCCTATTGAGTCAACCTGGG	18
	GGG-3'	
Mb01_03198	5'-TTTTTGTGCGACGACACAACCTGTCGCT-3'	19
	5'-TTTTTGAATTCCTAAGCGTCGATCCC-3'	20
phoY1_1	5'-TTTTTGTGCGACCGGACGGTCTAT-3'	21
	5'-TTTTTGAATTCAGTAAGTGGAATCT	22
	CGTCT-3'	
HBHA	5'-TTTTTGTGCGACGCTGAAACTCGAAC-3'	23
	5'-TTTTTGAATTCCTACTTCTGGGTGACCTT	24
	CTT-3'	

#### Vaccination and Challenge of Mice

TiterMax® Gold Adjuvant was purchased from Sigma-Aldrich. A total of 6 groups (9 mice in each group) of six-week-old female C57BL/6 mice were used in this study. Equal amounts of purified recombinant proteins were mixed together at a total concentration of 50 µg. At this concentration, 100 µl was used for intraperitoneal injections and 20 µl for inhalation. *M. smegmatis* clones overexpressing the target *M. bovis* BCG proteins were mixed together and a total amount of 10<sup>7</sup> CFUs were used for inhalation. Boost was carried out 1.5 weeks after primary immunization.

The groups with 9 mice in each group were set as follows:

- 1) Intraperitoneal immunization using 50 µg purified mixed recombinant proteins with the TiterMax® Gold Adjuvant;
- 2) Intraperitoneal injection with PBS in the TiterMax® Gold Adjuvant as a control for adjuvant effects;
- 3) Inhalation with 50 µg purified mixed recombinant proteins;
- 4) Inhalation with PBS;
- 5) Inhalation with 10<sup>7</sup> *M. smegmatis* overexpressing the target *M. bovis* BCG proteins;
- 6) Inhalation with 10<sup>7</sup> *M. smegmatis* with pMV261 vector as a control.

Three weeks post-vaccination, all mice were intranasally challenged with 10<sup>7</sup> BCG Pasteur strain pre-exposed to the granuloma-like conditions. Two weeks later, antisera were collected for IgG detection and lungs for IgA detection. One mouse in each group was euthanized for histological section, others were euthanized to determine the bacterial load. The organs were homogenized, debris removed by filtration, and serially diluted samples were plated on the Middlebrook 7H10 agar plates for the CFU counts of bacilli. The number of viable bacteria was counted after three weeks of incubation at 37° C.

#### IgG Detection

Total levels of IgG were detected using a commercially available kit (eBioscience, Vienna, Austria) according to the manufacturer's protocol. Briefly, 96-well plates were coated with 100 µL/well of capture antibody (pre-titrated, purified anti-mouse IgG monoclonal antibody) in PBS buffer overnight at 4° C. The wells were washed two times with PBS and blocked overnight at 4° C. Wells were incubated with 10 µL/well diluted (1:100) sera and 50 µL/well diluted detection antibody (pre-titrated, HRP-conjugated anti-mouse IgG polyclonal antibody) for 2 hours followed by three washes with PBS. The substrate solution (tetramethylbenzidine) was added for 15 minutes, and the reaction was stopped with stop solution of 2N H<sub>2</sub>SO<sub>4</sub>. Plates were recorded at 450 nm wavelength. The standard curve was made to quantify the total IgG levels. Five µg/ml mixed *M. bovis* BCG recombinant proteins were used to coat the 96-well plate to detect the specific IgG followed by the same steps as described for total IgG. No standard was used for the specific IgG.

#### IgA Detection

Total levels of IgA were detected using a commercial kit (eBioscience, Vienna, Austria) according to the manufacturer's protocol. Briefly, 96-well plates were coated with 100 µL/well of capture antibody (pre-titrated, purified anti-mouse IgA monoclonal antibody) in PBS buffer overnight at 4° C. The wells were washed two times with PBS and blocked overnight at 4° C. Wells were incubated with 10 µL/well diluted (1:50) lung homogenates and 50 µL/well diluted detection antibody (pre-titrated, HRP-conjugated anti-mouse IgA polyclonal antibody) for 3 hours at room temperature followed by four washes with PBS. Substrate solution was added for 15 minutes, and the reaction was



stopped with 2N H<sub>2</sub>SO<sub>4</sub>. Plates were recorded at 450 nm wavelength. The standard curve was created to quantify the total IgA levels.

Five µg/ml mixed *M. bovis* BCG recombinant proteins were used to coat the 96-well plate to detect specific IgA followed by the same steps as described for total IgA. Lung homogenates were 20 times diluted for specific IgA detection. No standard was used for specific IgA.

#### Statistical Analysis

In vitro experiments were repeated at least three times and data shown are means of the replicates and standard error. The student's t-test was used, and variance between experimental groups was assessed by one-way ANOVA. A value of  $p < 0.05$  was considered to be significant. Graph Pad Prism software version 5.0 was used for statistical analysis.

#### Example 2

##### *Mycobacterium Bovis* BCG Surface Antigens Expressed under Granuloma-Like Conditions as Inducers of Protective Immunity

This example describes studies to determine whether exposure to granuloma-like conditions influences the ability of *M. bovis* to bind and invade host cells, if granuloma-like conditions effect the composition of *M. bovis* surface proteins, if overexpression of surface antigens promotes the binding and invasion ability of *M. bovis*, and if bacterial surface antigens induce mucosal immunity in vivo.

The Granuloma-Like Environment Enhances *M. Bovis* BCG Binding and Invasion of Lung Epithelial A549 and THP-1 Macrophage-Like Cells

*M. bovis* BCG Pasteur strain was exposed to either standard laboratory conditions (pH 7.2, aerobic, 37° C.) or granuloma-like conditions (pH 6.0, anaerobic, 0.3 M dextrose, 37° C.) for 24 hours. Cell binding and invasion capability of *M. bovis* BCG exposed to each condition was tested. Bacteria were exposed to A549 epithelial cells and THP-1 macrophages for 30 minutes and 1 hour at 4° C. *M. bovis* BCG exposed to the environment mimicking the granuloma-like condition was able to bind to A549 cells with significantly greater efficiency than bacteria cultured in regular laboratory conditions (FIG. 1A). Similarly, *M. bovis* BCG exposed to the granuloma-like condition bound with significantly greater efficiency to THP-1 macrophages compared to bacteria cultured in regular laboratory conditions at both time points (FIG. 1B).

Invasion assays were carried out to determine whether different environmental conditions could influence *M. bovis* uptake by lung epithelial cells and macrophages. Bacteria were exposed to A549 epithelial cells and THP-1 macrophages for 30 minutes and 1 hour at 37° C. *M. bovis* BCG exposed to the granuloma-like condition was able to invade A549 epithelial cells and THP-1 macrophages with significantly greater efficiency than bacteria cultured in regular laboratory conditions at 1 hour post infection. Differences in *M. bovis* BCG uptake were also observed at 30 minutes post infection in both cell lines.

Proteomic Analysis of the Surface of *M. Bovis* BCG Exposed to Biologically Relevant Conditions

Since *M. bovis* BCG exposure to the granuloma-like condition induced efficient binding to and invasion of host cells, studies were carried out to identify surface molecules that contribute to these phenotypes. *M. bovis* BCG surface proteins were profiled to identify changes between the regular laboratory and granuloma-like conditions. To do this, *M. bovis* BCG surface exposed proteins were selec-

tively labeled and extracted for mass spectrometry analysis. A total of 1211 proteins were detected by mass spectrometry in both samples. Analysis of *M. bovis* BCG cultured in regular laboratory conditions identified 957 proteins, whereas 1097 proteins were identified for *M. bovis* BCG cultured in the granuloma-like condition. A Venn diagram (FIG. 2A) shows that 114 of the proteins detected in the regular lab condition cultured *M. bovis* BCG were absent in *M. bovis* BCG cultured in the granuloma-like condition; while 254 proteins were uniquely expressed in *M. bovis* BCG cultured in the granuloma-like condition. Twelve proteins were selected for further studies.

*M. Smegmatis* Clones Overexpressing *M. Bovis* BCG Surface Proteins Efficiently Bind and Invade Host Cells

*M. smegmatis* is a fast growing non-pathogenic mycobacteria that poorly binds and invades host epithelial cells, but is efficiently taken up by macrophages. In order to determine if the selected *M. bovis* BCG proteins contribute to host cell binding and invasion, *M. smegmatis* clones expressing all twelve *M. bovis* BCG surface exposed proteins were constructed. Using western blotting, it was found that *M. bovis* Mb1524, MbO1\_03198, phoY1\_1 and hbbA proteins were successfully expressed in *M. smegmatis* mc<sup>2</sup> 155 (FIG. 2B).

The overexpressed clones, along with an *M. smegmatis* control containing just the pMV261 vector, were tested for their ability to bind and invade A549 and bovine MDBK epithelial cells. While *M. smegmatis* overexpression of the phoY1\_1 protein had significantly higher binding ability compared to the three other clones at 30 minutes post-infection (FIG. 3A), all four clones were able to invade A549 cells with greater efficiency than control *M. smegmatis* containing the pMV261 vector at both time points. Only the *M. smegmatis* phoY1\_1 clone showed significantly greater binding ability to MDBK cells at 1 hour compared with the control. The invasion experiments of MDBK cells demonstrated that the clones expressing the hbbA and phoY1\_1 proteins had a significantly higher percentage of invasion than the other clones at 30 minutes post-infection. *M. smegmatis* overexpressing the Mb1524 protein invaded better than control bacteria only at 1 hour (FIG. 3B).

*M. Bovis* Recombinant Proteins Induce Protective Immunity in Mice Immunized by Inhalation and IP Routes

A first group of mice were immunized intranasally with a mixture of *M. bovis* Mb1524, MbO1\_03198, phoY1\_1 and hbbA recombinant proteins and TiterMax® Gold adjuvant. Phosphate buffered saline with adjuvant was used to immunize a control group of mice. A second group of mice was administered a mix of *M. smegmatis* clones overexpressing *M. bovis* surface proteins by intraperitoneal injection. An *M. smegmatis* clone with empty pMV261 vector served as a control. Studies were then performed to determine whether these immunization strategies could trigger protective immunity. Serum was collected from all mice and IgG levels were determined. It was found that mice immunized with recombinant protein by either inhalation or intraperitoneal routes had significantly higher levels of specific IgG antibody synthesized in the blood compared with the control groups (FIG. 4A). A significantly greater level of total IgG was identified in mice immunized with recombinant protein by IP injection (FIG. 4B), but no significant changes were observed in other experimental groups when compared to the control group.

To analyze mucosal antibody responses in the airway, IgA levels were measured. The results showed that production of IgA exhibited a similar trend as IgG. The recombinant protein immunized group showed significantly higher levels of specific IgA antibody when immunized via either inha-

lation or IP, but no significant changes were observed in other experimental groups when compared with the control groups (FIG. 4C). The significant production of total IgA antibody was observed only in the experimental group of mice immunized with recombinant proteins via the IP route (FIG. 4D).

#### Bacterial Loads in the Lungs of Pre-Immunized and BCG Challenge Groups

To measure the protective efficacy of immunization, bacterial load was determined in the lungs of the experimental and control groups of mice during the intranasal BCG challenge. The results demonstrate that bacterial CFUs were significantly reduced in the lungs of mice immunized via inhalation with the mix of recombinant proteins compared with the inhaled PBS plus adjuvant control group (FIG. 5). Summary

*M. bovis* present within an active tuberculosis cavity is immersed in an environment that is completely different from normal laboratory conditions, and thus the phenotype of bacteria in the biologically relevant environment differs from *M. bovis* grown in culture. The studies disclosed herein identified proteomic changes on the bacterial surface during exposure to the granuloma-like condition, and characterized some of the proteins that have a role in bacterial pathogenesis and/or contribute to host immune responses. These data demonstrate that *M. bovis* BCG cultured in the granuloma-like condition binds and invades A549 epithelial cells, THP-1 macrophages and MDBK epithelial cells more efficiently than bacteria exposed to the regular laboratory condition.

A comparative proteomics approach was used to identify bacterial surface proteins unique to the granuloma-like condition, and then selected surface proteins were tested for their ability to increase bacterial binding and invasion. Proteins Mb1524, MbO1\_03198 and phoY1\_1 were differentially expressed in *M. bovis* BCG cultured in granuloma-like condition. The hbbA protein was also selected for further studies because it contributes to bacterial interaction with epithelial cells and plays role in extrapulmonary dissemination during tuberculosis infection (Pethe et al., *Nature* 412:190-194, 2001; Silva et al., *Infect Immun* 81:2645-2659, 2013).

The selected *M. bovis* surface proteins expressed in the granuloma-like condition were found to play a role in binding and invasion of host cells, and induced a mucosal immune response in mice. The Mb1524 gene encodes a protein containing the conserved domain of the regulator of protease activity HflC, stomatin/prohibitin superfamily, whose function is unknown; however, it was proposed that through this domain, proteins can interact with the cell membrane and initiate signaling (Christie et al., *Mol Cell Biol* 31:3845-56, 2011). The MbO1\_03198 protein was also selected for further characterization. A domain search for MbO1\_03198 identified the diacylglycerol kinase family enzyme motif involved in lipid transport and metabolism, and domains of transcriptional regulator XRE-family helix-turn-helix and transcription elongation factor GreA/GreB, C-term.

The PhoY1 gene is ubiquitously present in virtually every bacterial species, including *M. tuberculosis*. PhoY1 encodes the phosphate-specific transport system accessory protein PhoU involved in regulation of phosphate uptake. Evidence suggests that two putative orthologs of PhoU, PhoY1 and PhoY2, promote *M. tuberculosis* persistence phenotype by

Pst-mediated phosphate sensing and enhance increased resistance to antibiotics both in vitro and in mice (Shi and Zhang, *J Antimicrob Chemother* 65:1237-1242, 2010; Namugenyi et al., *MBio* 8(4):e00494-17, 2017). In a study addressing the *M. tuberculosis* response to several stress conditions, PhoU was found to have a major role in maintaining metabolic homeostasis and adaptation to stress conditions (Wang et al., *J Bacteriol* 195:243-252, 2013), also offering possible explanation for PhoU related drug tolerance. It is demonstrated herein that phoY1 overexpression on the surface of *M. bovis* helps bacteria to better bind and invade epithelia cells and MDBK cells.

The heparin-binding hemagglutinin (hbbA) protein is a well-studied virulence factor of *M. tuberculosis*, *M. avium* and *M. leprae*, and plays a crucial role in bacterial binding to epithelial cells and to other non-phagocytic cells (Pethe et al., *Nature* 412:190-194, 2001; Silva et al., *Infect Immun* 81:2645-2659, 2013; Lefrancois et al., *BMC Res Notes* 6:55, 2013). It has been demonstrated that hbbA is involved in extrapulmonary dissemination during tuberculosis infection and in the binding of *M. leprae* to the respiratory mucosa (Pethe et al., *Nature* 412:190-194, 2001; Silva et al., *Infect Immun* 81:2645-2659, 2013; Lanfrancini and Alvarez, *Biochimie* 127:241-248, 2016). Mucosal immunization with the yeast-expressed recombinant hbbA impairs extrapulmonary dissemination of *M. bovis* BCG and, in combination with a mucosal adjuvant, hbbA induces immune protection against mycobacterial infection by triggering systemic and local humoral immunity (Kohama et al., *Vaccine* 26:924-932, 2008). Although hbbA was present in both phenotypes of granuloma-like and regular lab condition of *M. bovis* BCG, because of the potential function and effect on the immune response, this protein was selected for analysis and its function in binding and invasion of human epithelial cells and bovine MDBK cells was confirmed.

In the present study, Mb1524, MbO1\_03198, phoY1\_1 and hbbA were further investigated in vivo for immunization antigenicity. The results indicate that while all *M. smegmatis* clones overexpressing proteins did not improve the immune antibody response for either IgA or IgG, recombinant protein delivery by either intranasal immunization or intraperitoneal injection stimulated specific IgA and IgG antibody levels, and total IgA and IgG were increased following IP immunization. It is well established that the increased levels of IgA and IgG expressly influence the mucosal immune response and protect the host from *M. bovis* BCG infection. Significant changes in bacterial burden in the lungs were observed in mice that received the mixture of recombinant proteins by the intranasal immunization.

Taken together, the results disclosed herein indicate improved protective efficacy of the recombinant protein mixture of Mb1524, MbO1\_03 198, phoY1\_1 and hbbA against *M. Bovis* BCG at the mucosal surface.

In view of the many possible embodiments to which the principles of the disclosure may be applied, it should be recognized that the illustrated embodiments are only examples and should not be taken as limiting the scope of the invention. Rather, the scope of the invention is defined by the following claims. We therefore claim as our invention all that comes within the scope and spirit of these claims.

## SEQUENCE LISTING

<160> NUMBER OF SEQ ID NOS: 24

<210> SEQ ID NO 1

<211> LENGTH: 1095

<212> TYPE: DNA

<213> ORGANISM: Mycobacterium bovis

<400> SEQUENCE: 1

```

gtgcaaggag cggttgctgg tctggtgttt ctggccgtcc tggtgatttt cgccatcacc 60
gtggtggcca agtcggtggc gctgatcccg caggcggagg ccgcggtgat cgagcggctg 120
ggtcgctata gtcgtacggt cagtgggcag ttgacgctgt tggtgccggt catcgaccgc 180
gtccgggctc gggtggaact gcgcgagcgg gtggtgtcgt ttccgccgca accggtgacc 240
accgaggaca acttgacgct gaacatcgac accgtcgtct acttcagggt gaccgttccg 300
caggcggcgg tgtacgagat cagcaattac atcgtcgggg tcgaacagct caccaccacc 360
accaccctgc gcaacgttgt cggcgggatg acgctggagc agacgttgac ctgcgctgac 420
cagatcaacg cccagctgcg cggcggttct gatgaggcga ccggccgctg ggtctctcgg 480
gtggcgcggg tggagctgcg cagcatcgat ccgcccgggt cgattcaggc gtcgatggaa 540
aagcagatga aggccgaccg ggagaagcga gcgatgattc tgaccgccga aggtaccggg 600
gaggcggcga taaaacagcg cgaggggcaa aagcaggcgc agatcctggc cgccgagggc 660
gccaagcagg ccgcgatctt ggctgctgag gccgatcggc agtctcggat gctgcgcgct 720
cagggtgagc gcgcccgggc ctacctgcag gcgcaagggc aggccaaagg catcgagaag 780
acgttcgccg cgatcaaggc tggccggccc accccggaga tgctggccta ccaatactg 840
cagacgtgct cggagatggc gcgtggggac gccaacaagg tatgggtggt gccagcgac 900
ttcaacgcgc cactgcaggg ttcaccaggc tgctgggcaa gccgggtgag gacggggtgt 960
tccggttcga gccgtccccc gtcgaagacc agcccaagca ccgggccgac ggtgacgacg 1020
ccgaggtcgc ccgctgggtc tccaccgata ccgaccgctc gatcgctcgg gcggtggcta 1080
cagccgaggc gatag 1095

```

<210> SEQ ID NO 2

<211> LENGTH: 381

<212> TYPE: PRT

<213> ORGANISM: Mycobacterium bovis

<400> SEQUENCE: 2

```

Met Gln Gly Ala Val Ala Gly Leu Val Phe Leu Ala Val Leu Val Ile
1           5           10          15
Phe Ala Ile Ile Val Val Ala Lys Ser Val Ala Leu Ile Pro Gln Ala
20          25          30
Glu Ala Ala Val Ile Glu Arg Leu Gly Arg Tyr Ser Arg Thr Val Ser
35          40          45
Gly Gln Leu Thr Leu Leu Val Pro Phe Ile Asp Arg Val Arg Ala Arg
50          55          60
Val Asp Leu Arg Glu Arg Val Val Ser Phe Pro Pro Gln Pro Val Ile
65          70          75          80
Thr Glu Asp Asn Leu Thr Leu Asn Ile Asp Thr Val Val Tyr Phe Gln
85          90          95
Val Thr Val Pro Gln Ala Ala Val Tyr Glu Ile Ser Asn Tyr Ile Val
100         105         110
Gly Val Glu Gln Leu Thr Thr Thr Thr Leu Arg Asn Val Val Gly Gly
115         120         125

```

-continued

---

Met Thr Leu Glu Gln Thr Leu Thr Ser Arg Asp Gln Ile Asn Ala Gln  
130 135 140

Leu Arg Gly Val Leu Asp Glu Ala Thr Gly Arg Trp Gly Leu Arg Val  
145 150 155 160

Ala Arg Val Glu Leu Arg Ser Ile Asp Pro Pro Pro Ser Ile Gln Ala  
165 170 175

Ser Met Glu Lys Gln Met Lys Ala Asp Arg Glu Lys Arg Ala Met Ile  
180 185 190

Leu Thr Ala Glu Gly Thr Arg Glu Ala Ala Ile Lys Gln Ala Glu Gly  
195 200 205

Gln Lys Gln Ala Gln Ile Leu Ala Ala Glu Gly Ala Lys Gln Ala Ala  
210 215 220

Ile Leu Ala Ala Glu Ala Asp Arg Gln Ser Arg Met Leu Arg Ala Gln  
225 230 235 240

Gly Glu Arg Ala Ala Ala Tyr Leu Gln Ala Gln Gly Gln Ala Lys Ala  
245 250 255

Ile Glu Lys Thr Phe Ala Ala Ile Lys Ala Gly Arg Pro Thr Pro Glu  
260 265 270

Met Leu Ala Tyr Gln Tyr Leu Gln Thr Leu Pro Glu Met Ala Arg Gly  
275 280 285

Asp Ala Asn Lys Val Trp Val Val Pro Ser Asp Phe Asn Ala Ala Leu  
290 295 300

Gln Gly Phe Thr Arg Leu Leu Gly Lys Pro Gly Glu Asp Gly Val Phe  
305 310 315 320

Arg Phe Glu Pro Ser Pro Val Glu Asp Gln Pro Lys His Ala Ala Asp  
325 330 335

Gly Asp Asp Ala Glu Val Ala Gly Trp Phe Ser Thr Asp Thr Asp Pro  
340 345 350

Ser Ile Ala Arg Ala Val Ala Thr Ala Glu Ala Ile Ala Arg Lys Pro  
355 360 365

Val Glu Gly Ser Leu Gly Thr Pro Pro Arg Leu Thr Gln  
370 375 380

<210> SEQ ID NO 3  
<211> LENGTH: 480  
<212> TYPE: DNA  
<213> ORGANISM: Mycobacterium bovis

<400> SEQUENCE: 3

```

gtggacacaa ctgtcgctac catgatcagc aaatacatat agataaccgt ttgtctcttg      60
agcccgggtgg aggtcacatc gatgagcacg acgttcgctg cccgcctgaa ccgcctgttc      120
gacacgggttt atccgcccg acgcgggcca catacctccg cggaggtgat cgcggcgctc      180
aaggcagagg gcatcacgat gtcggtcccc tacctatcac agctacgctc aggaaaccgt      240
acgaacccat cgggggcgac catggccgcc ctggccaact tcttcgcat caaggcggcc      300
tacttcaccg acgacagta ctacgaaaag ctcgacaagg aattgcagtg gctgtgcacg      360
atgcgcgacg acggcggtcg ccggtatcgc cagcggggccc acgggttgcc ctccgcggcg      420
cagcagaagg tgttggaccg gatcgacgag ctgcggcgtg ccgaagggat cgacgcttag      480

```

<210> SEQ ID NO 4  
<211> LENGTH: 159  
<212> TYPE: PRT  
<213> ORGANISM: Mycobacterium bovis

-continued

&lt;400&gt; SEQUENCE: 4

```

Met Asp Thr Thr Val Ala Thr Met Ile Ser Lys Tyr Ile Gln Ile Thr
1           5           10           15
Val Cys Ser Trp Ser Pro Val Glu Val Thr Ser Met Ser Thr Thr Phe
                20           25           30
Ala Ala Arg Leu Asn Arg Leu Phe Asp Thr Val Tyr Pro Pro Gly Arg
          35           40           45
Gly Pro His Thr Ser Ala Glu Val Ile Ala Ala Leu Lys Ala Glu Gly
          50           55           60
Ile Thr Met Ser Ala Pro Tyr Leu Ser Gln Leu Arg Ser Gly Asn Arg
65           70           75           80
Thr Asn Pro Ser Gly Ala Thr Met Ala Ala Leu Ala Asn Phe Phe Arg
          85           90           95
Ile Lys Ala Ala Tyr Phe Thr Asp Asp Glu Tyr Tyr Glu Lys Leu Asp
          100          105          110
Lys Glu Leu Gln Trp Leu Cys Thr Met Arg Asp Asp Gly Val Arg Arg
          115          120          125
Ile Ala Gln Arg Ala His Gly Leu Pro Ser Ala Ala Gln Gln Lys Val
          130          135          140
Leu Asp Arg Ile Asp Glu Leu Arg Arg Ala Glu Gly Ile Asp Ala
145          150          155

```

&lt;210&gt; SEQ ID NO 5

&lt;211&gt; LENGTH: 666

&lt;212&gt; TYPE: DNA

&lt;213&gt; ORGANISM: Mycobacterium bovis

&lt;400&gt; SEQUENCE: 5

```

atgccggacgg tctatcacca gcggctaacc gagttggccg gacgattggg agagatgtgc      60
agcctggccg ggatagcgat gaaacgcgca acgcaggctc tgctcgaggc cgacattggc      120
gccgctgaac aagtaatccg tgaccatgag cggatcgtgg cgatgcgagc ccaagtcgaa      180
aaggaagcgt tcgcgctgct gccgttgcaa catccggtgt ccggcgagct gcgggaaatc      240
ttcagtgcgg tgcagatcat cgccgacacc gagcgcatgg gtgcgttggc tgtgcatatt      300
gccaaagatca cccgacgcga gtatccgaac caggtgcttc ctgaggaagt tcgcaactgc      360
ttcgcgcgaca tggcgaaggt ggcaatcgcg ttgggtgaca gtgcaagaca agtgcgtggtg      420
aaccgtgacc cgcaggaagc cgcgcaactg cacgatcgtg acgacgcgat ggatgacctg      480
cataggcatt tgctgagcgt gctgatatag cgagaatggc ggcacggcgt tcgcgtcggc      540
gtggaaacgg cgttgctggg tcgtttcttt gagcgcttcg ccgaccacgc tgtggaagtg      600
ggcgcgcgcg tcattcttcat ggtaaccggg gtgctaccga ccgaggacga gatttccact      660
tactga                                           666

```

&lt;210&gt; SEQ ID NO 6

&lt;211&gt; LENGTH: 221

&lt;212&gt; TYPE: PRT

&lt;213&gt; ORGANISM: Mycobacterium bovis

&lt;400&gt; SEQUENCE: 6

```

Met Arg Thr Val Tyr His Gln Arg Leu Thr Glu Leu Ala Gly Arg Leu
1           5           10           15
Gly Glu Met Cys Ser Leu Ala Gly Ile Ala Met Lys Arg Ala Thr Gln
          20           25           30

```

-continued

---

Ala Leu Leu Glu Ala Asp Ile Gly Ala Ala Glu Gln Val Ile Arg Asp  
35 40 45

His Glu Arg Ile Val Ala Met Arg Ala Gln Val Glu Lys Glu Ala Phe  
50 55 60

Ala Leu Leu Ala Leu Gln His Pro Val Ser Gly Glu Leu Arg Glu Ile  
65 70 75 80

Phe Ser Ala Val Gln Ile Ile Ala Asp Thr Glu Arg Met Gly Ala Leu  
85 90 95

Ala Val His Ile Ala Lys Ile Thr Arg Arg Glu Tyr Pro Asn Gln Val  
100 105 110

Leu Pro Glu Glu Val Arg Asn Cys Phe Ala Asp Met Ala Lys Val Ala  
115 120 125

Ile Ala Leu Gly Asp Ser Ala Arg Gln Val Leu Val Asn Arg Asp Pro  
130 135 140

Gln Glu Ala Ala Gln Leu His Asp Arg Asp Asp Ala Met Asp Asp Leu  
145 150 155 160

His Arg His Leu Leu Ser Val Leu Ile Asp Arg Glu Trp Arg His Gly  
165 170 175

Val Arg Val Gly Val Glu Thr Ala Leu Leu Gly Arg Phe Phe Glu Arg  
180 185 190

Phe Ala Asp His Ala Val Glu Val Gly Arg Arg Val Ile Phe Met Val  
195 200 205

Thr Gly Val Leu Pro Thr Glu Asp Glu Ile Ser Thr Tyr  
210 215 220

<210> SEQ ID NO 7  
<211> LENGTH: 584  
<212> TYPE: DNA  
<213> ORGANISM: Mycobacterium bovis

<400> SEQUENCE: 7

atggctgaaa actcgaacat tgatgacatc aaggctccgt tgcttgccgc gcttgagcgc	60
gccgacctgg ccttgccac tgatcacga acctgcgtga gcgtgcggag	120
gagactcgta cggacacccg cagccgggtc gaggagagcc gtgctcgcct gaccaagctg	180
caggaagatc tgcccagca gctcaccgag ctgctgaga agttaccgc cgaggagctg	240
cgtaaggccg ccgagggcta cctcaggcc gcgactagcc ggtacaacga gctggtcgag	300
cgcggtgagg ccgctctaga gcggtgcgc agccagcaga gcttcgagga agtgcggcg	360
cgcgccgaag gctacgtgga ccaggcgggt gagttgaccc aggaggcgtt gggtagcggtc	420
gcacgcaga ccgcgcggt cggtgagcgt gccgccaagc tggtcggcat cgagctgcct	480
aagaaggctg ctccggccaa gaaggccgct ccggccaaga aggcgcgtcc ggccaagaag	540
gcggcggcca agaaggcgc cgccaagaag gcggcggcca agaa	584

<210> SEQ ID NO 8  
<211> LENGTH: 194  
<212> TYPE: PRT  
<213> ORGANISM: Mycobacterium bovis

<400> SEQUENCE: 8

Met Ala Glu Asn Ser Asn Ile Asp Asp Ile Lys Ala Pro Leu Leu Ala	
1 5 10 15	
Ala Leu Gly Ala Ala Asp Leu Ala Leu Ala Thr Val Asn Glu Leu Ile	
20 25 30	

-continued

---

Thr Asn Leu Arg Glu Arg Ala Glu Glu Thr Arg Thr Asp Thr Arg Ser  
                   35                  40                  45

Arg Val Glu Glu Ser Arg Ala Arg Leu Thr Lys Leu Gln Glu Asp Leu  
                   50                  55                  60

Pro Glu Gln Leu Thr Glu Leu Arg Glu Lys Phe Thr Ala Glu Glu Leu  
                   65                  70                  75                  80

Arg Lys Ala Ala Glu Gly Tyr Leu Glu Ala Ala Thr Ser Arg Tyr Asn  
                   85                  90                  95

Glu Leu Val Glu Arg Gly Glu Ala Ala Leu Glu Arg Leu Arg Ser Gln  
                   100                  105                  110

Gln Ser Phe Glu Glu Val Ser Ala Arg Ala Glu Gly Tyr Val Asp Gln  
                   115                  120                  125

Ala Val Glu Leu Thr Gln Glu Ala Leu Gly Thr Val Ala Ser Gln Thr  
                   130                  135                  140

Arg Ala Val Gly Glu Arg Ala Ala Lys Leu Val Gly Ile Glu Leu Pro  
                   145                  150                  155                  160

Lys Lys Ala Ala Pro Ala Lys Lys Ala Ala Pro Ala Lys Lys Ala Ala  
                   165                  170                  175

Pro Ala Lys Lys Ala Ala Ala Lys Lys Ala Pro Ala Lys Lys Ala Ala  
                   180                  185                  190

Ala Lys

<210> SEQ ID NO 9  
 <211> LENGTH: 44  
 <212> TYPE: DNA  
 <213> ORGANISM: Artificial Sequence  
 <220> FEATURE:  
 <223> OTHER INFORMATION: Synthetic oligonucleotide primer

<400> SEQUENCE: 9

tttttgaatt ccatcatcat catcatcatc aaggagccgt tgct

44

<210> SEQ ID NO 10  
 <211> LENGTH: 32  
 <212> TYPE: DNA  
 <213> ORGANISM: Artificial Sequence  
 <220> FEATURE:  
 <223> OTHER INFORMATION: Synthetic oligonucleotide primer

<400> SEQUENCE: 10

tttttgtcga cctattgagt caacctgggg gg

32

<210> SEQ ID NO 11  
 <211> LENGTH: 41  
 <212> TYPE: DNA  
 <213> ORGANISM: Artificial Sequence  
 <220> FEATURE:  
 <223> OTHER INFORMATION: Synthetic oligonucleotide primer

<400> SEQUENCE: 11

tttttgaatt ccatcatcat catcatcatg acacaactgt c

41

<210> SEQ ID NO 12  
 <211> LENGTH: 26  
 <212> TYPE: DNA  
 <213> ORGANISM: Artificial Sequence  
 <220> FEATURE:  
 <223> OTHER INFORMATION: Synthetic oligonucleotide primer

<400> SEQUENCE: 12

tttttgtcga cctaagcgtc gatccc

26

-continued

---

<210> SEQ ID NO 13  
<211> LENGTH: 41  
<212> TYPE: DNA  
<213> ORGANISM: Artificial Sequence  
<220> FEATURE:  
<223> OTHER INFORMATION: Synthetic oligonucleotide primer

<400> SEQUENCE: 13

tttttgaatt ccatcatcat catcatcatc ggacgggtcta t 41

<210> SEQ ID NO 14  
<211> LENGTH: 34  
<212> TYPE: DNA  
<213> ORGANISM: Artificial Sequence  
<220> FEATURE:  
<223> OTHER INFORMATION: Synthetic oligonucleotide primer

<400> SEQUENCE: 14

tttttgtcga ctcagtaagt ggaaatctcg tcct 34

<210> SEQ ID NO 15  
<211> LENGTH: 44  
<212> TYPE: DNA  
<213> ORGANISM: Artificial Sequence  
<220> FEATURE:  
<223> OTHER INFORMATION: Synthetic oligonucleotide primer

<400> SEQUENCE: 15

tttttgaatt ccatcatcat catcatcatg ctgaaaactc gaac 44

<210> SEQ ID NO 16  
<211> LENGTH: 32  
<212> TYPE: DNA  
<213> ORGANISM: Artificial Sequence  
<220> FEATURE:  
<223> OTHER INFORMATION: Synthetic oligonucleotide primer

<400> SEQUENCE: 16

tttttgtcga cctacttctg ggtgacctc tt 32

<210> SEQ ID NO 17  
<211> LENGTH: 26  
<212> TYPE: DNA  
<213> ORGANISM: Artificial Sequence  
<220> FEATURE:  
<223> OTHER INFORMATION: Synthetic oligonucleotide primer

<400> SEQUENCE: 17

tttttgtcga ccaaggagcc gttgct 26

<210> SEQ ID NO 18  
<211> LENGTH: 32  
<212> TYPE: DNA  
<213> ORGANISM: Artificial Sequence  
<220> FEATURE:  
<223> OTHER INFORMATION: Synthetic oligonucleotide primer

<400> SEQUENCE: 18

tttttgaatt cctattgagt caacctgggg gg 32

<210> SEQ ID NO 19  
<211> LENGTH: 26  
<212> TYPE: DNA  
<213> ORGANISM: Artificial Sequence  
<220> FEATURE:



-continued

---

```

<223> OTHER INFORMATION: Synthetic oligonucleotide primer

<400> SEQUENCE: 19

tttttgtcga cgacacaact gtcgct                                26

<210> SEQ ID NO 20
<211> LENGTH: 26
<212> TYPE: DNA
<213> ORGANISM: Artificial Sequence
<220> FEATURE:
<223> OTHER INFORMATION: Synthetic oligonucleotide primer

<400> SEQUENCE: 20

tttttgaatt cctaagcgctc gatccc                                26

<210> SEQ ID NO 21
<211> LENGTH: 23
<212> TYPE: DNA
<213> ORGANISM: Artificial Sequence
<220> FEATURE:
<223> OTHER INFORMATION: Synthetic oligonucleotide primer

<400> SEQUENCE: 21

tttttgtcga ccggacggctc tat                                  23

<210> SEQ ID NO 22
<211> LENGTH: 34
<212> TYPE: DNA
<213> ORGANISM: Artificial Sequence
<220> FEATURE:
<223> OTHER INFORMATION: Synthetic oligonucleotide primer

<400> SEQUENCE: 22

ttttttgaat tccagtaagt ggaaatctcg tctt                        34

<210> SEQ ID NO 23
<211> LENGTH: 26
<212> TYPE: DNA
<213> ORGANISM: Artificial Sequence
<220> FEATURE:
<223> OTHER INFORMATION: Synthetic oligonucleotide primer

<400> SEQUENCE: 23

tttttgtcga cgctgaaaac tcgaac                                26

<210> SEQ ID NO 24
<211> LENGTH: 32
<212> TYPE: DNA
<213> ORGANISM: Artificial Sequence
<220> FEATURE:
<223> OTHER INFORMATION: Synthetic oligonucleotide primer

<400> SEQUENCE: 24

tttttgaatt cctacttctg ggtgaccttc tt                          32

```

---

The invention claimed is:

1. An immunogenic composition, comprising at least four isolated surface proteins from *Mycobacterium bovis*, wherein the at least four isolated surface proteins comprise:  
a protein comprising at least 90% sequence identity with the amino acid sequence of SEQ ID NO: 2;  
a protein comprising at least 90% sequence identity with the amino acid sequence of SEQ ID NO: 4;  
a protein comprising at least 90% sequence identity with the amino acid sequence of SEQ ID NO: 6; and

a protein comprising at least 90% sequence identity with the amino acid sequence of SEQ ID NO: 8,  
wherein the immunogenic composition is formulated for mucosal administration, intranasal administration or intramuscular administration.

2. The immunogenic composition of claim 1, wherein the at least four isolated surface proteins from *M. bovis* comprise:

a protein comprising at least 95% sequence identity with the amino acid sequence of SEQ ID NO: 2;

39

a protein comprising at least 95% sequence identity with the amino acid sequence of SEQ ID NO: 4;  
 a protein comprising at least 95% sequence identity with the amino acid sequence of SEQ ID NO: 6; and  
 a protein comprising at least 95% sequence identity with the amino acid sequence of SEQ ID NO: 8.

3. The immunogenic composition of claim 1, wherein the at least four isolated surface proteins from *M. bovis* comprise:

a protein comprising the amino acid sequence of SEQ ID NO: 2;  
 a protein comprising the amino acid sequence of SEQ ID NO: 4;  
 a protein comprising the amino acid sequence of SEQ ID NO: 6; and  
 a protein comprising the amino acid sequence of SEQ ID NO: 8.

4. A method of eliciting an immune response against *M. bovis* or an *M. bovis* antigen in a subject, comprising intranasally or intramuscularly administering to the subject the immunogenic composition of claim 3, thereby eliciting an immune response against *M. bovis* or *N. M. bovis* antigen in the subject.

5. The immunogenic composition of claim 1, further comprising a pharmaceutically acceptable carrier, an adjuvant, or both.

6. A method of eliciting an immune response in a subject, comprising administering to the subject the immunogenic composition of claim 1, thereby eliciting an immune response in the subject.

7. The method of claim 6, wherein the immunogenic composition is administered intranasally or intramuscularly.

8. The method of claim 6, wherein the subject is a non-human animal.

9. The method of claim 8, wherein the subject is a bovine subject.

10. A kit comprising the immunogenic composition of claim 1, and instructions for administration of the immunogenic composition and/or a description of the components of the immunogenic composition.

11. The immunogenic composition of claim 1, wherein the immunogenic composition formulated for mucosal administration is formulated for oral, pulmonary, rectal or vaginal administration.

40

12. An immunogenic composition, comprising:  
 at least four isolated surface proteins from *Mycobacterium bovis*, wherein the at least four isolated surface proteins comprise a protein comprising at least 90% sequence identity with the amino acid sequence of SEQ ID NO: 2; a protein comprising at least 90% sequence identity with the amino acid sequence of SEQ ID NO: 4; a protein comprising at least 90% sequence identity with the amino acid sequence of SEQ ID NO: 6; and a protein comprising at least 90% sequence identity with the amino acid sequence of SEQ ID NO: 8; and  
 an adjuvant comprising a block polymer, squalene and sorbitan monooleate.

13. The immunogenic composition of claim 12, wherein the at least four isolated surface proteins from *M. bovis* comprise a protein comprising at least 95% sequence identity with the amino acid sequence of SEQ ID NO: 2; a protein comprising at least 95% sequence identity with the amino acid sequence of SEQ ID NO: 4; a protein comprising at least 95% sequence identity with the amino acid sequence of SEQ ID NO: 6; and a protein comprising at least 95% sequence identity with the amino acid sequence of SEQ ID NO: 8.

14. The immunogenic composition of claim 12, wherein the at least four isolated surface proteins from *M. bovis* comprise a protein comprising the amino acid sequence of SEQ ID NO: 2; a protein comprising the amino acid sequence of SEQ ID NO: 4; a protein comprising the amino acid sequence of SEQ ID NO: 6; and a protein comprising the amino acid sequence of SEQ ID NO: 8.

15. The immunogenic composition of claim 12, further comprising a pharmaceutically acceptable carrier.

16. The immunogenic composition of claim 12, wherein the immunogenic composition is formulated for mucosal administration, intranasal administration or intramuscular administration.

17. The immunogenic composition of claim 16, wherein the immunogenic composition formulated for mucosal administration is formulated for oral, pulmonary, rectal or vaginal administration.

18. A kit comprising the immunogenic composition of claim 12, and instructions for administration of the immunogenic composition and/or a description of the components of the immunogenic composition.

\* \* \* \* \*